



Mounting Arms Catalog
Revised 04/2011

D/F MACHINE SPECIALTIES, INC.

MIG & TIG Welding Products, Consumables & Accessories

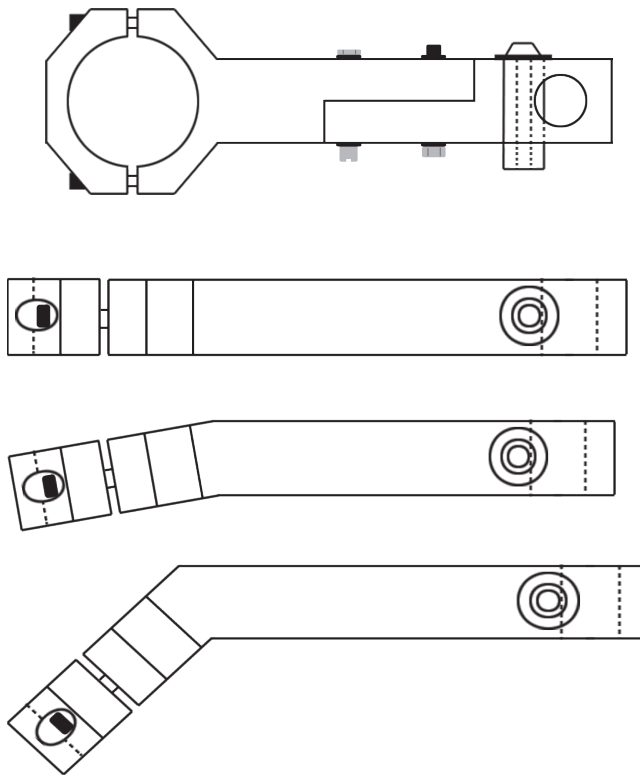
1750 Howard Drive, North Mankato, MN 56003

Phone: (507) 625-6200 Fax: (507) 625-6203

Email: sales@dfmachinespecialties.com

www.dfmachinespecialties.com

DEDICATED & ROBOTIC MOUNTING ARMS



MIG & TIG MACHINE BARRELS & GUNS

D/F MACHINE SPECIALTIES is a world leader in the design, development, and manufacture of “MIG” (GMAW) & “TIG” (GTAW) welding products, consumables and accessories. D/F offers several types of manual Air or Water-Cooled “MIG” welding tools, and with the increased use of automated and robotic welding systems, a demand has been created for welding tools of the highest quality, durability and interchangeability. For over forty years, D/F welding products have been used extensively on “MIG” and “TIG” welding applications. This experience, coupled with patented design features, unavailable on any other competitive equipment, has made D/F welding tools the most advanced “MIG” and “TIG” welding guns and barrels for semi-automatic, automatic or robotic welding applications.

This Catalog is a guide to helping you select the proper tool for a given semi-automatic, automatic or robotic welding application. The following is only a partial listing of available semi-automatic, automatic and robotic guns. For further information on special “MIG” and “TIG” requirements, please consult the factory.

Customer satisfaction and customer benefits are the center points of all strategic contents

The spirit of the D/F Machine Specialties personnel is to listen to and to integrate the customer throughout the process, to develop and design marketable products, to present prototypes, to carry out pilot tests and to prepare for and be open to new technology and tasks. We attract and carefully select talented individuals who share our values. Together we will nurture and sustain a work environment with two-way communication, training, mentoring, and rewarding career opportunities.

Innovation and quality

Innovation and quality come from being receptive and willing to learn from others. We encourage our people to be creative and take risks in the pursuit of excellence. Innovative practices are deeply rooted in every one of our employees, a philosophy that leads to continuous product development and industry firsts.

Progress

By remaining confident, focused, and persistent in challenging times, we will discover opportunity. Commitment to quality and the pursuit on innovation ensure that D/F Machine Specialties will remain an industry leader for years to come.

Commitment to excellence

At D/F Machine Specialties we commit to design, build and deliver premium products and superior customer support to quality driven welding professionals. Customers still to this day choose D/F over competitors because of our responsiveness and flexibility. Customers will continue to choose D/F tomorrow for our superior hand-made products and service. To ensure this, we need creative and competent personnel in all business divisions, an intensive exchange of thoughts and ideas with all users, participation in working and study groups within the field of welding technology and intensive cooperation with institutes and universities.

Teamwork

Striving for excellence is a commitment that is an integral component of the D/F Culture. Our team of skilled and dedicated employees takes pride in the excellence products they produce. Each of us willingly accepts personal responsibility for meeting our commitments and we hold each other to a high standard of accountability.

Responsibility

We will continually strive to be environmentally responsible and to support the health and safety of our employees, customers, and neighbors. We continue to support the communities in which we operate and the industries in which we participate.

Thank You for Choosing D/F Machine Specialties



Table Of Contents

Introduction.....	4
Universal Mounting Arm & Accessories.....	5
Discs, Bushings, Mounts	6
Utility Stations.....	7
NCM/HTM Remote Mount W/C Machine Barrels	8-9
NCM/HTM Conventional W/C Barrel.....	10
NCM/HTM Remote Mount W/C Nozzles	11-13
NCC/HTC Remote Mount 30 Deg. W/C Curved Guns.....	14
NCC/HTC Remote Mount 55 Deg. W/C Curved Guns.....	15-16
NCC/HTC Remote Mount 45 Deg. W/C Curved Guns.....	17-20
Water-Cooled Curved Gun - Extension Arrangement	21
CCW/CTW Remote Mount 55 Deg. (Long) W/C Curved Gun.....	22-24
CCW/CTW Remote Mount 55 Deg. (Short) W/C Curved Gun	25-27
CW-C/CW-T Remote Mount 35 Deg. (Long) W/C Curved Gun.....	28-30
CW-C/CW-T Remote Mount 35 Deg. (Short) W/C Curved Gun.....	31-33
MTW/MCW/MTW-G (Gasless) Remote Mount W/C Machine Barrel	34
TM-CN/TM-MN Remote Mount TIG Barrel.....	35
NCM/HTM Remote Mount W/C Nozzles - Miller MRK-5	36-38
MTW-G/CWT, 35 Deg. Universal Mounting.....	39
NCM-N/HTM-N 5" & NCC-LRN/HTC-LRN Long Reach - Universal Mounting	40
NCM-N/HTM-N 5" & Long Reach Curved Guns - Universal Mounting.....	41
NCC-LRN/HTC-LRN 22 & 45 Deg. Curved Guns - Universal Mounting	42

INTRODUCTION

This catalog provides layouts of Machine Barrel and Curved Gun mounting. A broad selection is available to accommodate a variety of production requirements.

Figure 1, page 5, illustrates the Universal Mounting Arms that utilize a single piece Barrel/Gun Arm Mount. The Mounting Arm arrangement incorporates a Universal Bracket that offers the capability to accomplish various angles such as 15 degrees up, 15 degrees down, horizontal, 30 degrees down, 45 degrees down and 90 degrees.

Bracket #40865 incorporates a wedge bolt for attachment to the Robot Safety Mount.

In Figure 2. a series of Extension Arms are illustrated. Additional reach is accomplished with these arms as illustrated on page 17.

Figure 3 depicts a Flanged Post Mount. The Flanged Post Mount maybe utilized as a Machine/Gun support for dedicated fixturing or as a Robotic Mount.

A Mounting bracket is illustrated in Figure 4. This Bracket accepts all D/F Machine Barrels and Curved Guns and will adapt to the Binzel Mount.

The Mounting Bracket illustrated in Figure 5 offers a means of mounting Machine Barrels and Guns axially to the wrist of a Robot. The Mounting Bracket when used with the Flanged Post offers an excellent means of applying welding equipment to dedicated weld tooling. A phenolic bracket is available for TIG barrel mounting as depicted on page 31.

Copyright © 1989-2011 D/F Machine Specialties, Inc. All Rights Reserved.

D/F Docking Spool® and Posit® are registered trademarks of D/F Machine Specialties, Inc.

Miller and MRK-5 are registered trademarks of Miller Electric Mfg. Co.

General Notice: Other product names mentioned herein are used for identification purposes only and may be trademarks of their respective companies.

REMOTE MOUNT MACHINE BARREL LAYOUT

FIGURE 1 - UNIVERSAL MOUNTING ARM (6", 8" & 10")

Ref.	Code No.	Description
1		Insulating Disc - Ref. Table I Page 6
2	40519-S	Rumble Safety Mount - Medium Duty Standard
	41246-QD	Rumble Safety Mount - Medium Duty Quick-Disconnect
	40520-S	Rumble Safety Mount - Heavy Duty Standard
	41247-QD	Rumble Safety Mount - Heavy Duty Quick-Disconnect
3	40865	Rear Shaft Bracket Only
4	40869	Arm Assembly - Complete 6"
	40870	Arm Assembly - Complete 8"
	40871	Arm Assembly - Complete 10"
5	40539	Bushing
6	40565	Arm - Only 6"
	40566	Arm - Only 8"
	40567	Arm - Only 10"

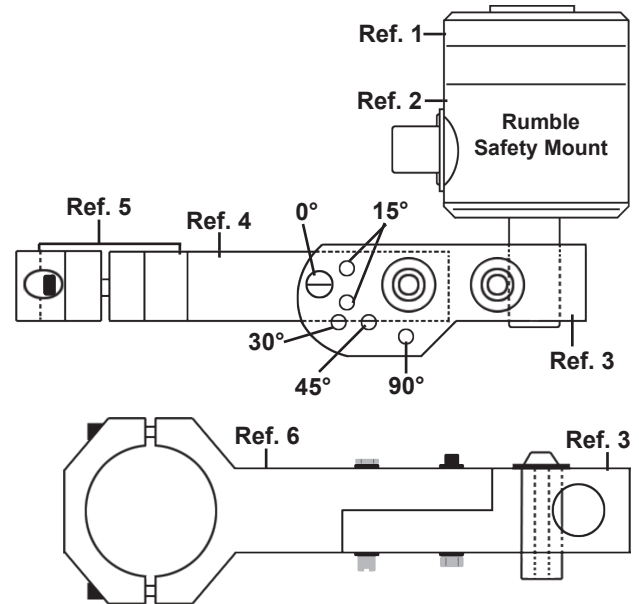


FIGURE 2 - EXTENSION ARMS

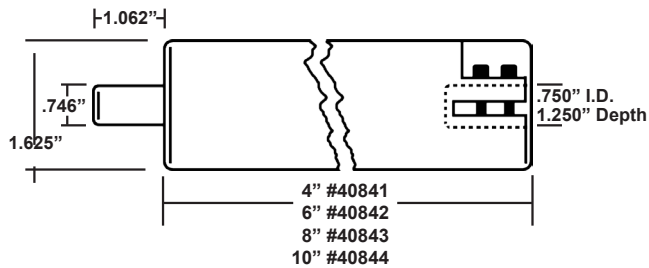


FIGURE 3 - FLANGED POST (40589)

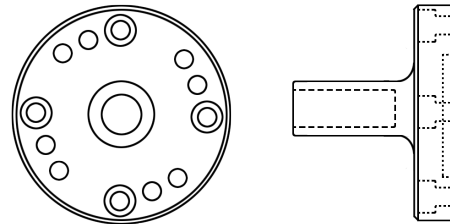


FIGURE 4 - MOUNTING BRACKET (40810)
(Binzel Robotic Mount)

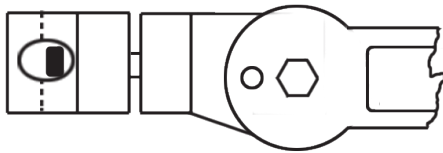


FIGURE 5 - MOUNTING BRACKET (40597)
Aluminum - For Flanged Post or Safety Mounts

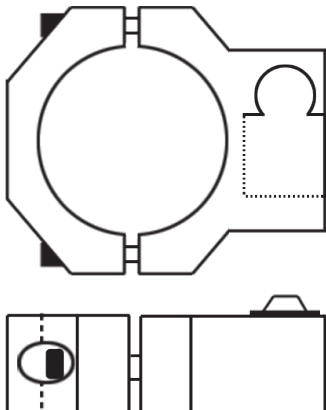
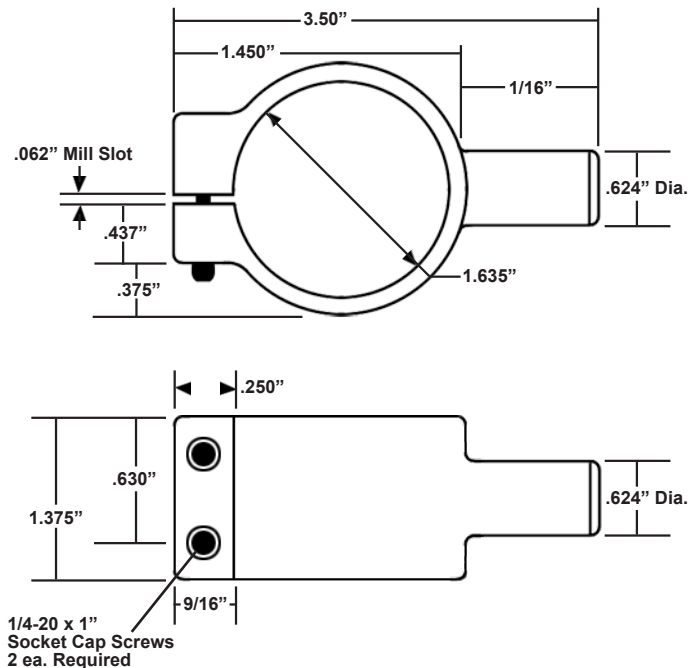


FIGURE 6 - MOUNTING BRACKET (14085)



INSULATING DISCS, MOUNTING ARM BUSHINGS, & SAFETY MOUNTS

TABLE I - INSULATING DISCS

Robot Model	Code No.
ASEA	
RTB-6	40591
RTB-2000	40595
CYBOTECH	
H-80 Series	40507
H-280 Series	40507
WV-15	40507
TH-8	40507
GA-100 (GANTRY)	40507
GMF	
S100	40547
S200	40547
ArcMate-Jr./Sr.	40547
HITACHI	
PW-10	40507
MILACRON	
T3-726	40521
T3-746	40522
T3-776	40523
T3-786	40524
T3-566	40525
T3-586	40526
T3-735	40527
T3-646	40546
MILLER MRK-5	40596
MOTOMAN	40506
MOTOMAN-K SERIES	40598
WESTINGHOUSE	
Komatsu RWL-0005	40548
Unimation 760	40549

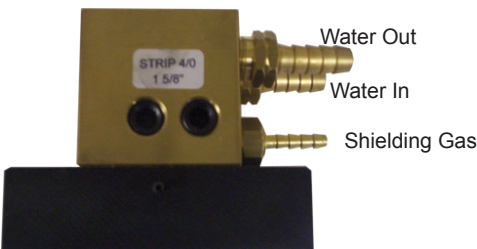
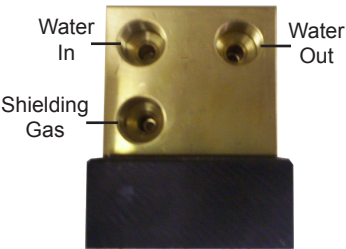
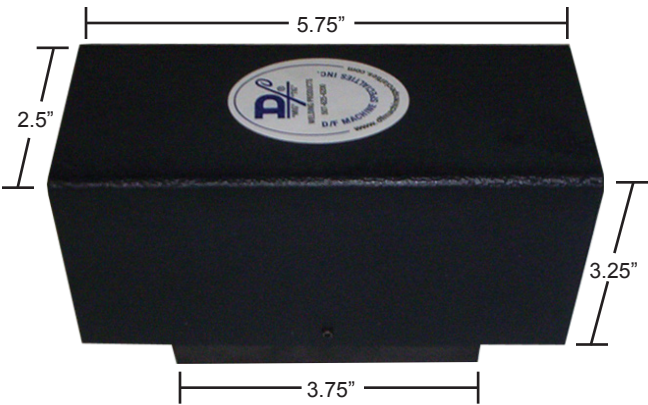
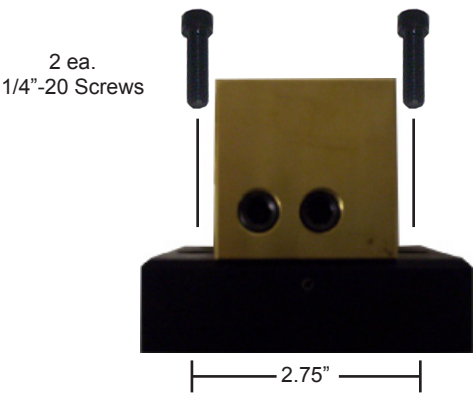
TABLE II - MOUNTING ARM BUSHINGS

Code No.	Description
40539	Docking Spools 1-3/4" I.D.
30248	Conventional Curved Gun (NCC/HTC) 1-1/2" I.D.
30249	Conventional Machine Barrel (NCM/HTM) 1-5/8" I.D.
40545	Hypertherm Torch 2" I.D.
40590	Hypertherm Torch 1-3/8" I.D.

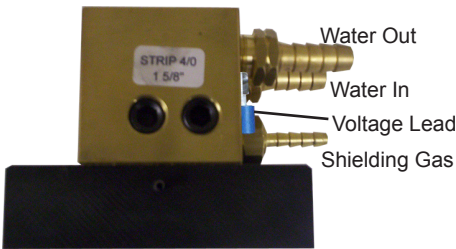
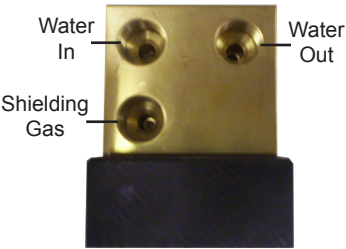
TABLE III - SAFETY MOUNTS

Code No.	Description
40501	Light Duty Rumble Safety Mount
40519	Medium Duty Rumble Safety Mount
40520	Heavy Duty Rumble

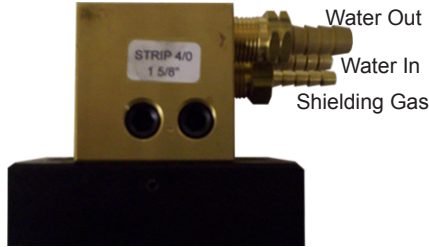
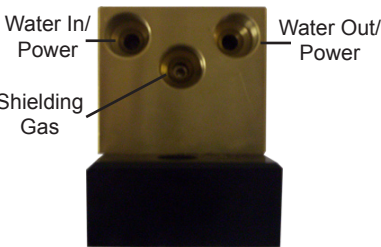
UTILITY STATIONS



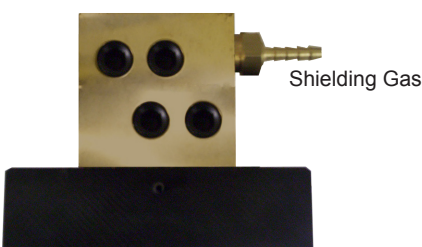
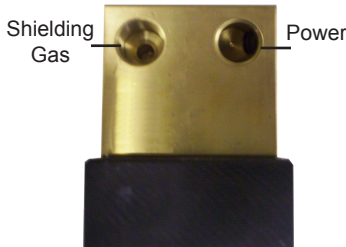
Code No.	Description
45196	Utility Station - Standard



Code No.	Description
45204	Utility Station - Lincoln w/ Voltage Sensing Lead

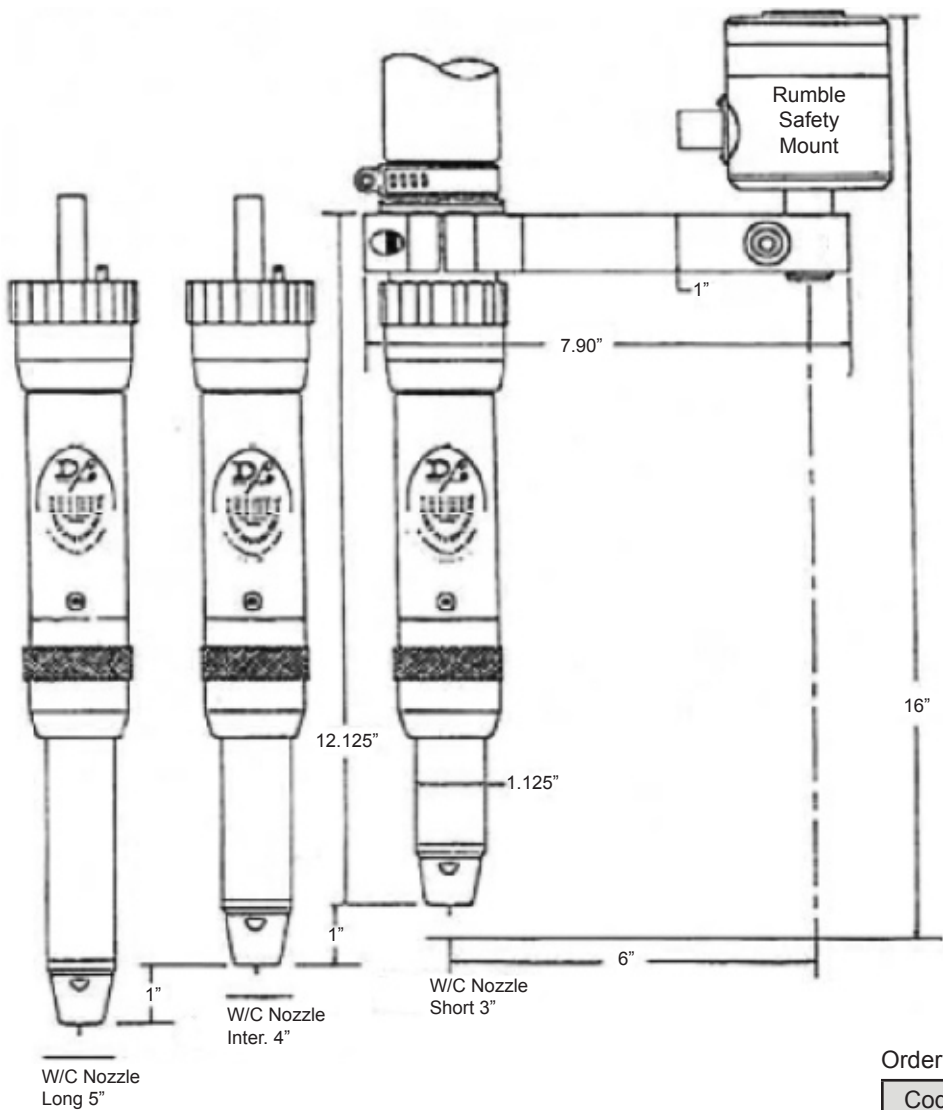


Code No.	Description
45188	Utility Station - Dual Power



Code No.	Description
45184	Utility Station - Air-Cooled Barrels

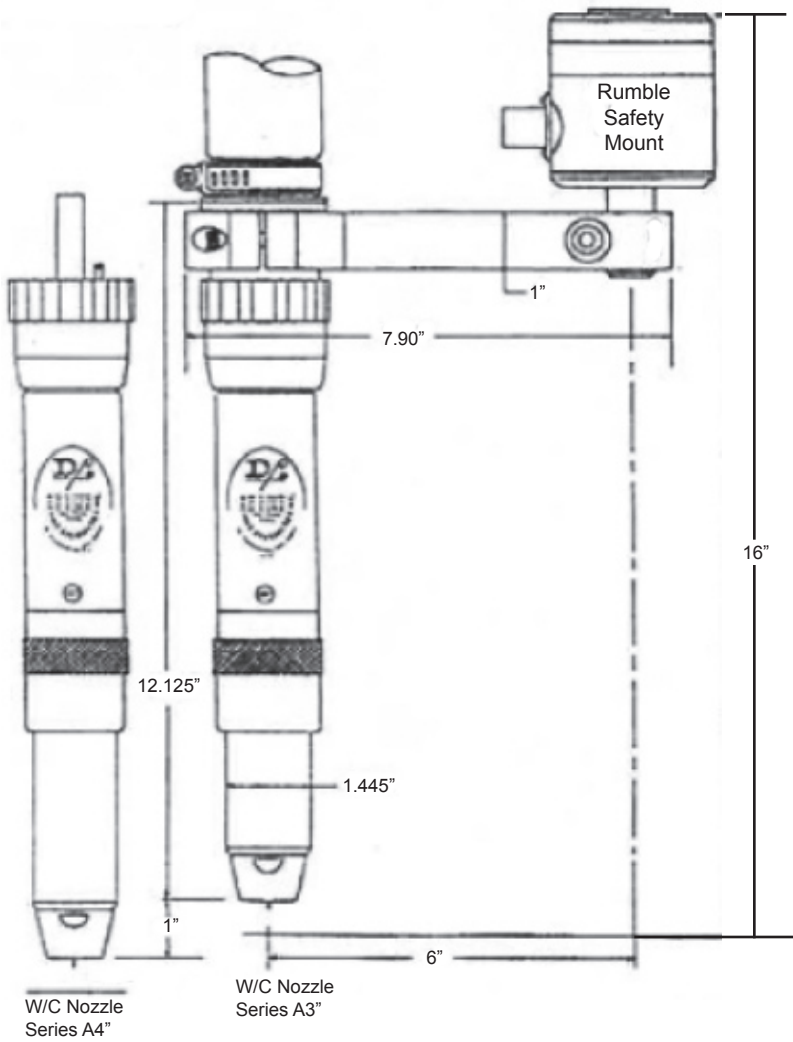
REMOTE MOUNT MACHINE BARREL LAYOUT
Straight Mounting Arm 40820
Long 5", Inter. 4", Short 3" Water-Cooled Nozzles



Ordering Information - Safety Mount

Code No.	Description
40501	Light Duty Rumble Safety Mount
40519	Medium Duty Rumble Safety Mount
40520	Heavy Duty Rumble

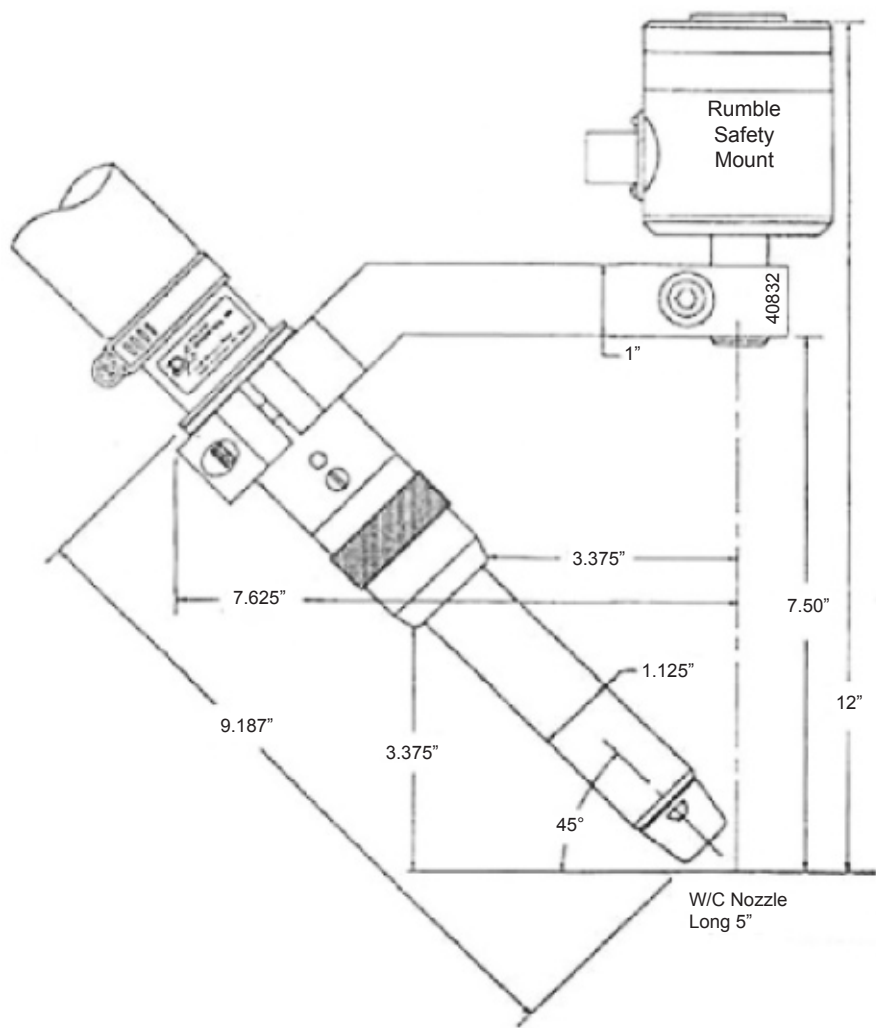
REMOTE MOUNT MACHINE BARREL LAYOUT
Straight Mounting Arm 40820
Series A5", Series A4" Water-Cooled Nozzles



Ordering Information - Safety Mount

CODE NO.	DESCRIPTION
40501	Light Duty Rumble Safety Mount
40519	Medium Duty Rumble Safety Mount
40520	Heavy Duty Rumble

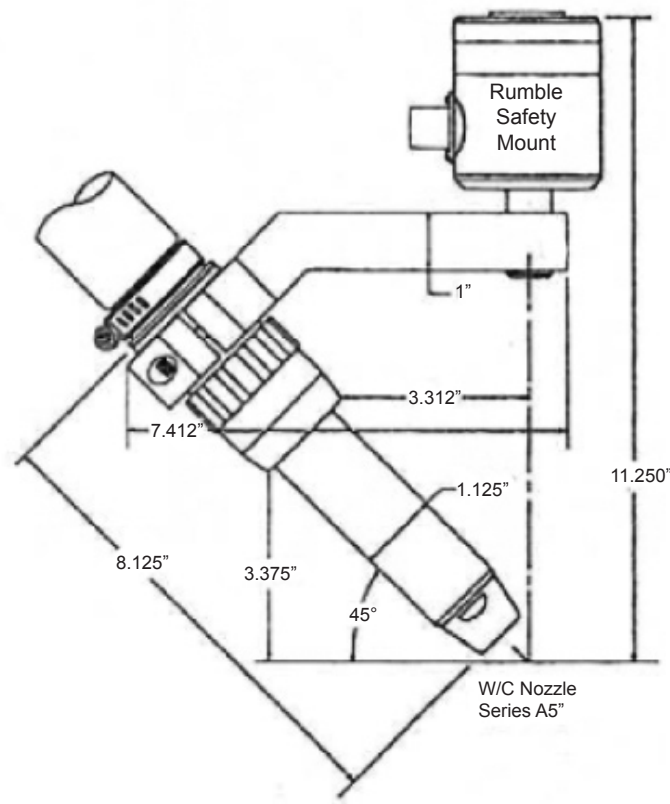
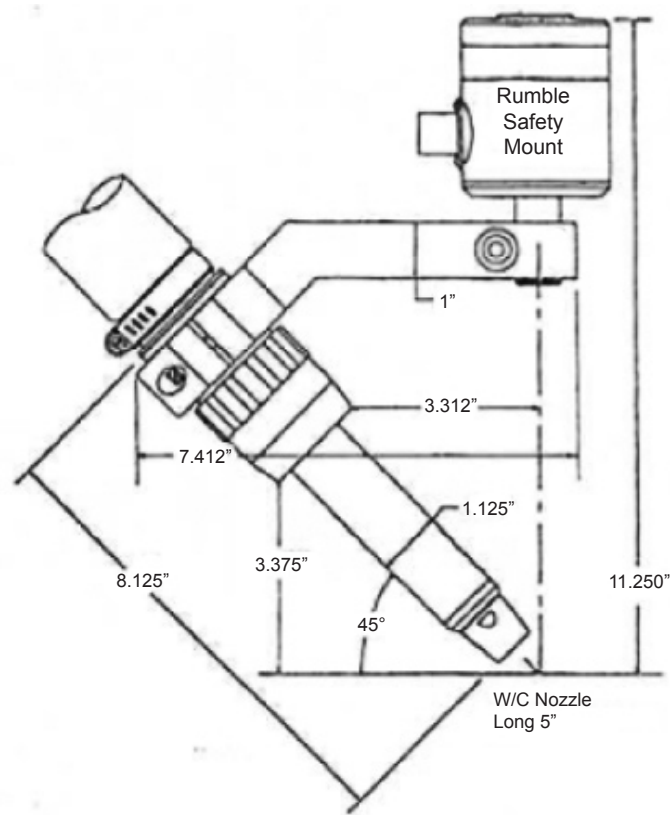
REMOTE MOUNT MACHINE BARREL LAYOUT
45° Mounting Arm 40832
Long 5" Water-Cooled Nozzle



Ordering Information - Safety Mount

CODE NO.	DESCRIPTION
40501	Light Duty Rumble Safety Mount
40519	Medium Duty Rumble Safety Mount
40520	Heavy Duty Rumble

REMOTE MOUNT MACHINE BARREL LAYOUT
45° Mounting Arm 40532
Long 5" & Series A5" Water-Cooled Nozzles



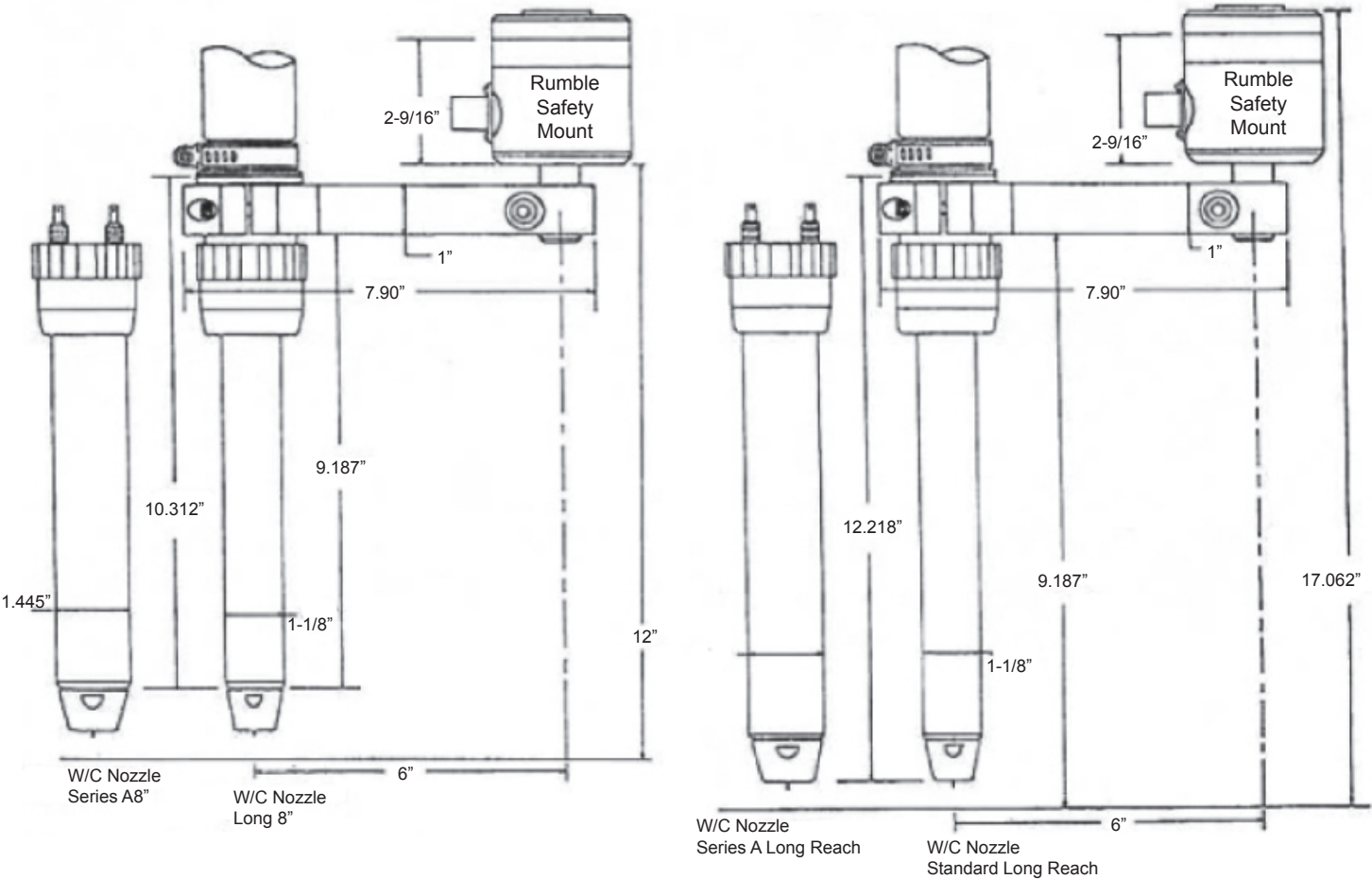
Ordering Information - Safety Mount

CODE NO.	DESCRIPTION
40501	Light Duty Rumble Safety Mount
40519	Medium Duty Rumble Safety Mount
40520	Heavy Duty Rumble

REMOTE MOUNT MACHINE BARREL LAYOUT

Straight Mounting Arm 40820

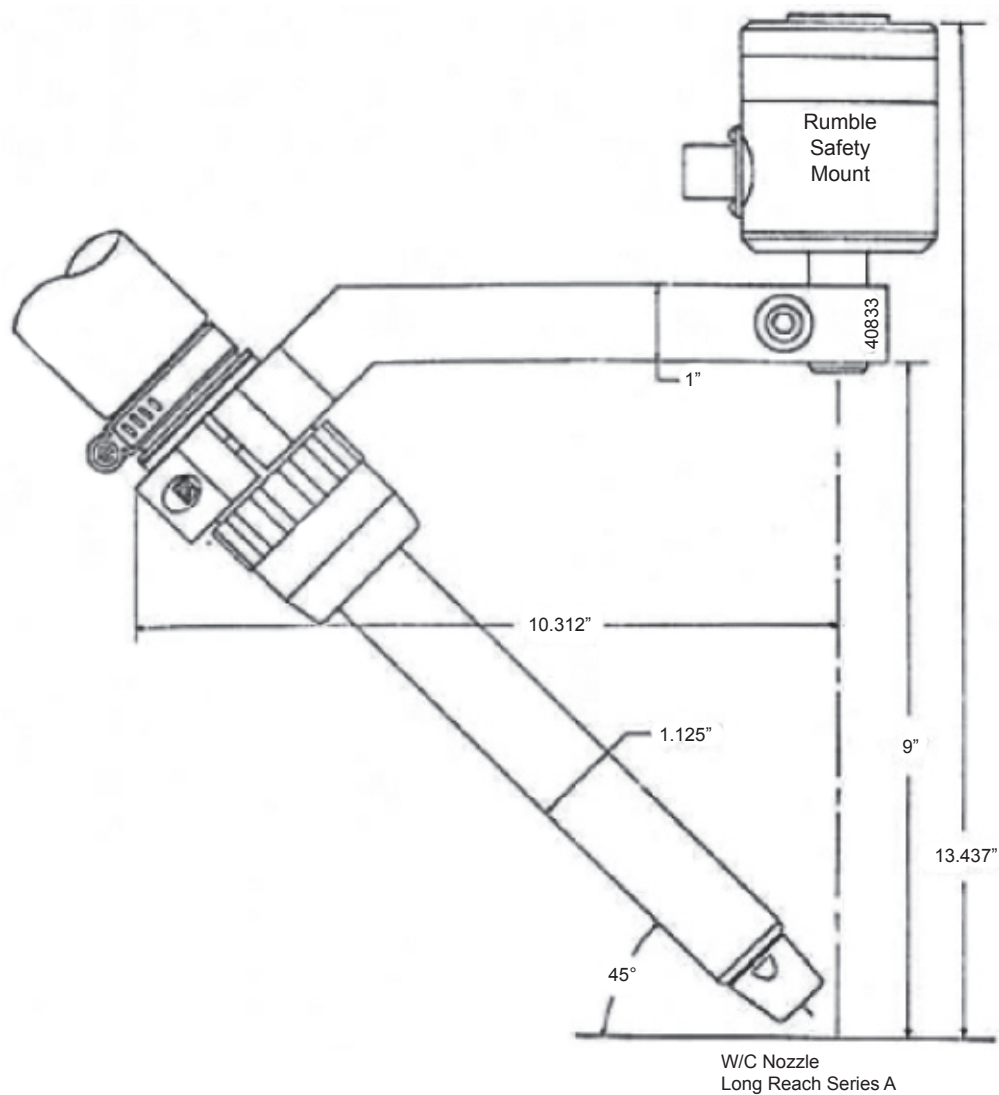
Long 8", Series A8", Series A Long Reach & Standard Long Reach Water-Cooled Nozzles



Ordering Information - Safety Mount

CODE NO.	DESCRIPTION
40501	Light Duty Rumble Safety Mount
40519	Medium Duty Rumble Safety Mount
40520	Heavy Duty Rumble

REMOTE MOUNT MACHINE BARREL LAYOUT
45° Mounting Arm 40833
Standard Long Reach Water-Cooled Nozzle



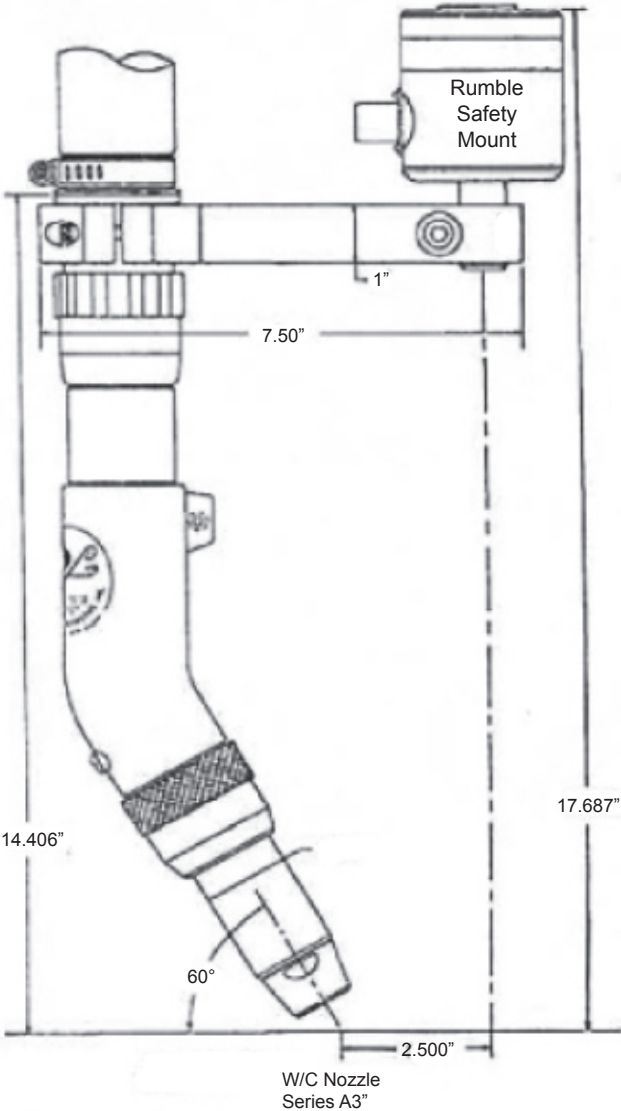
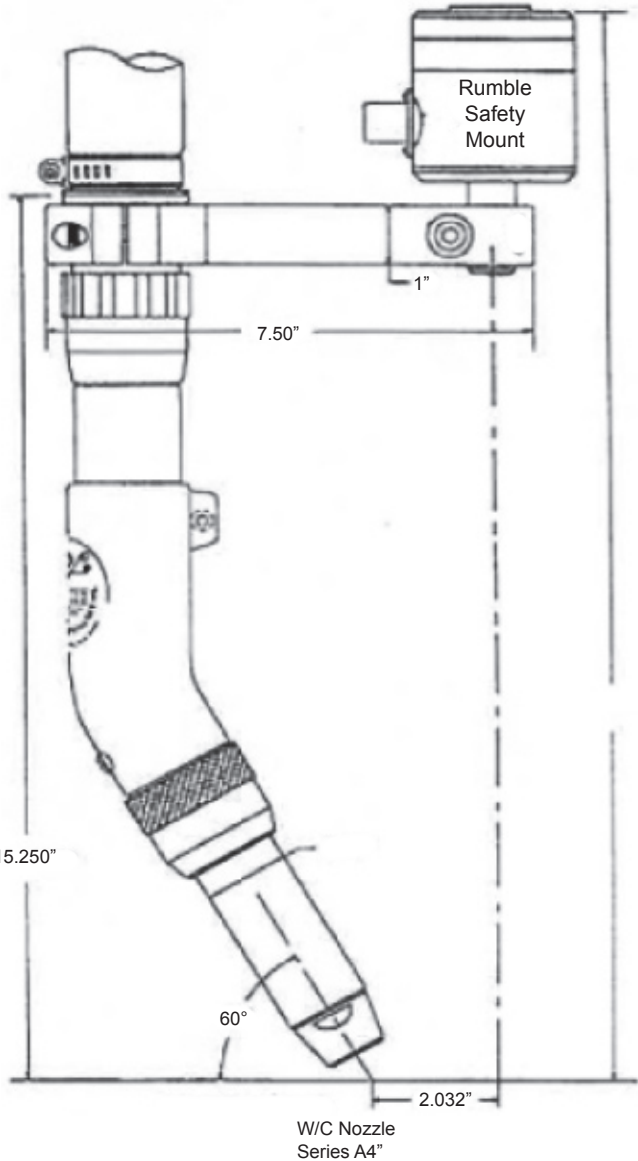
Ordering Information - Safety Mount

CODE NO.	DESCRIPTION
40501	Light Duty Rumble Safety Mount
40519	Medium Duty Rumble Safety Mount
40520	Heavy Duty Rumble

REMOTE MOUNT MACHINE BARREL LAYOUT

Straight Mounting Arm 40822 - 30° Water-Cooled Curved Gun

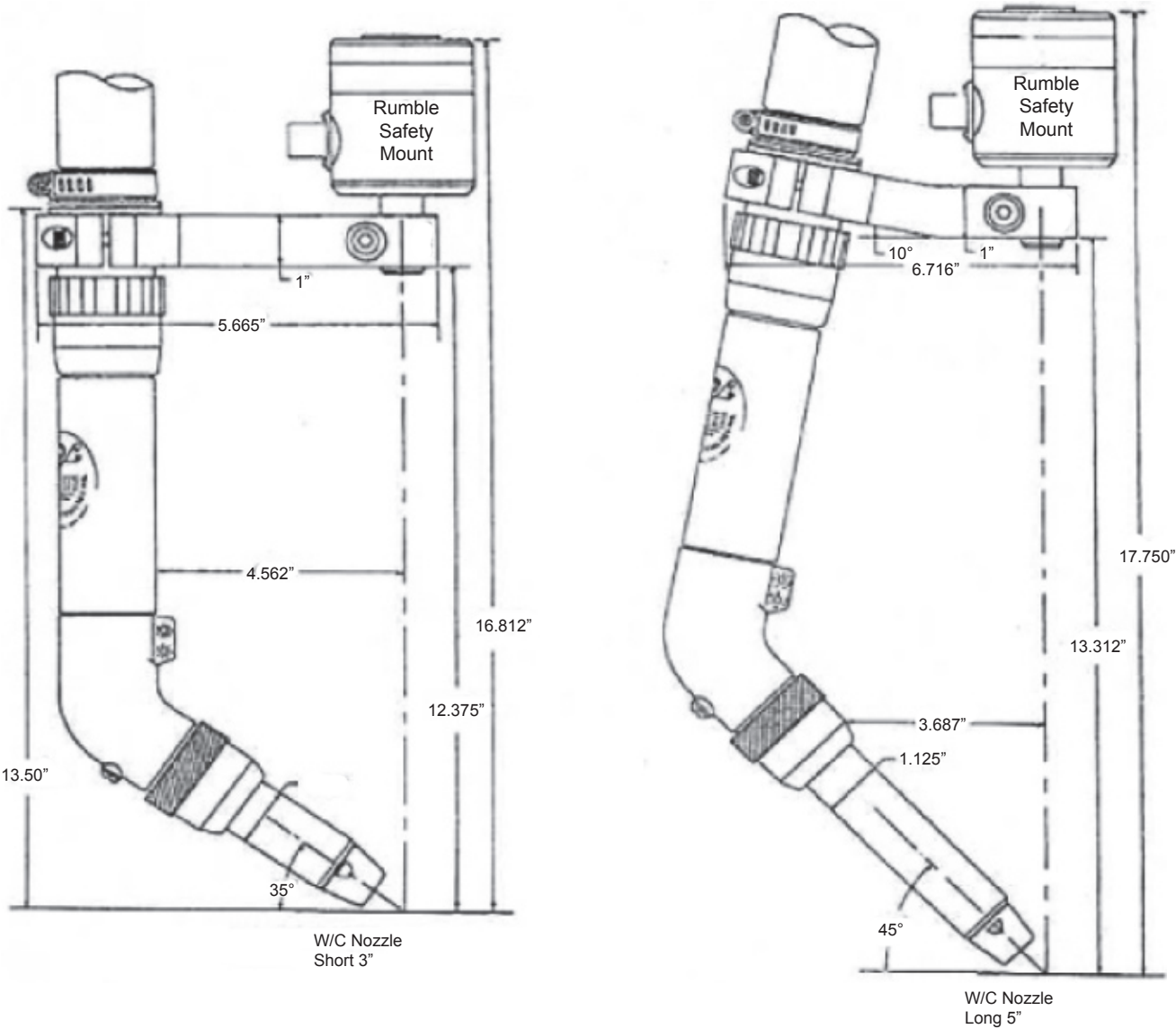
Series A3" & Series A4" Water-Cooled Nozzles



Ordering Information - Safety Mount

CODE NO.	DESCRIPTION
40501	Light Duty Rumble Safety Mount
40519	Medium Duty Rumble Safety Mount
40520	Heavy Duty Rumble

REMOTE MOUNT MACHINE BARREL LAYOUT
Straight 40536 & 10° 40831 Mounting Arms - 55° Water-Cooled Curved Gun
Short 3" & Long 5" Water-Cooled Nozzles

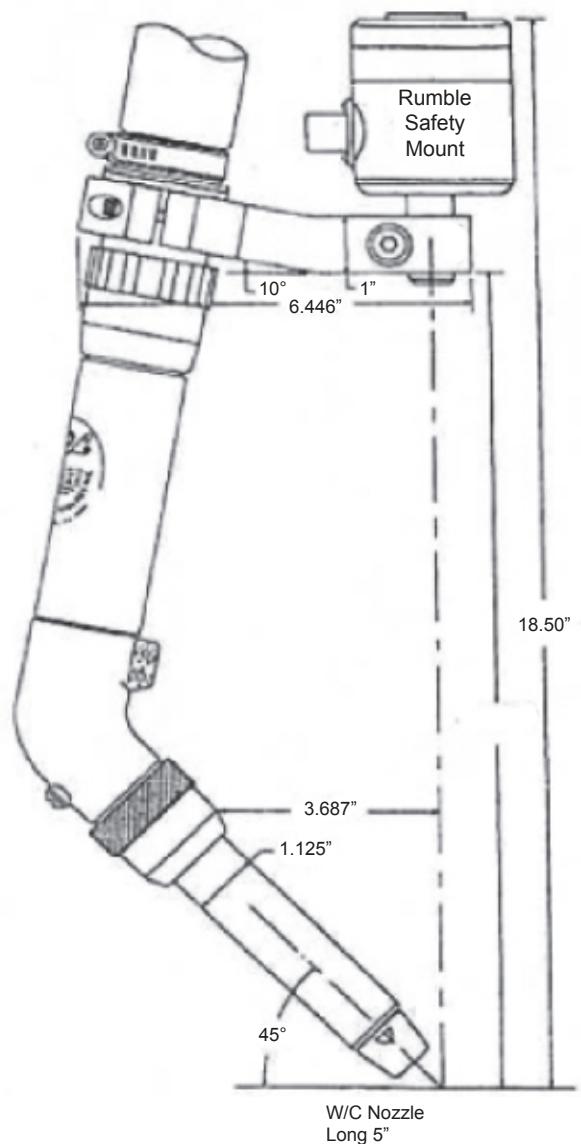
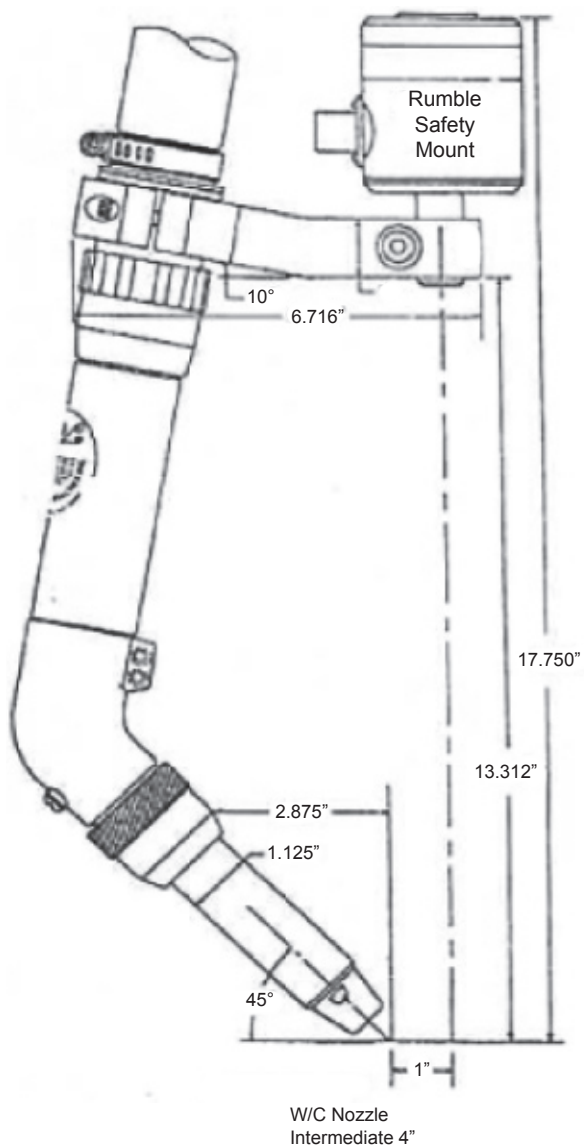


Ordering Information - Safety Mount

CODE NO.	DESCRIPTION
40501	Light Duty Rumble Safety Mount
40519	Medium Duty Rumble Safety Mount
40520	Heavy Duty Rumble

REMOTE MOUNT MACHINE BARREL LAYOUT

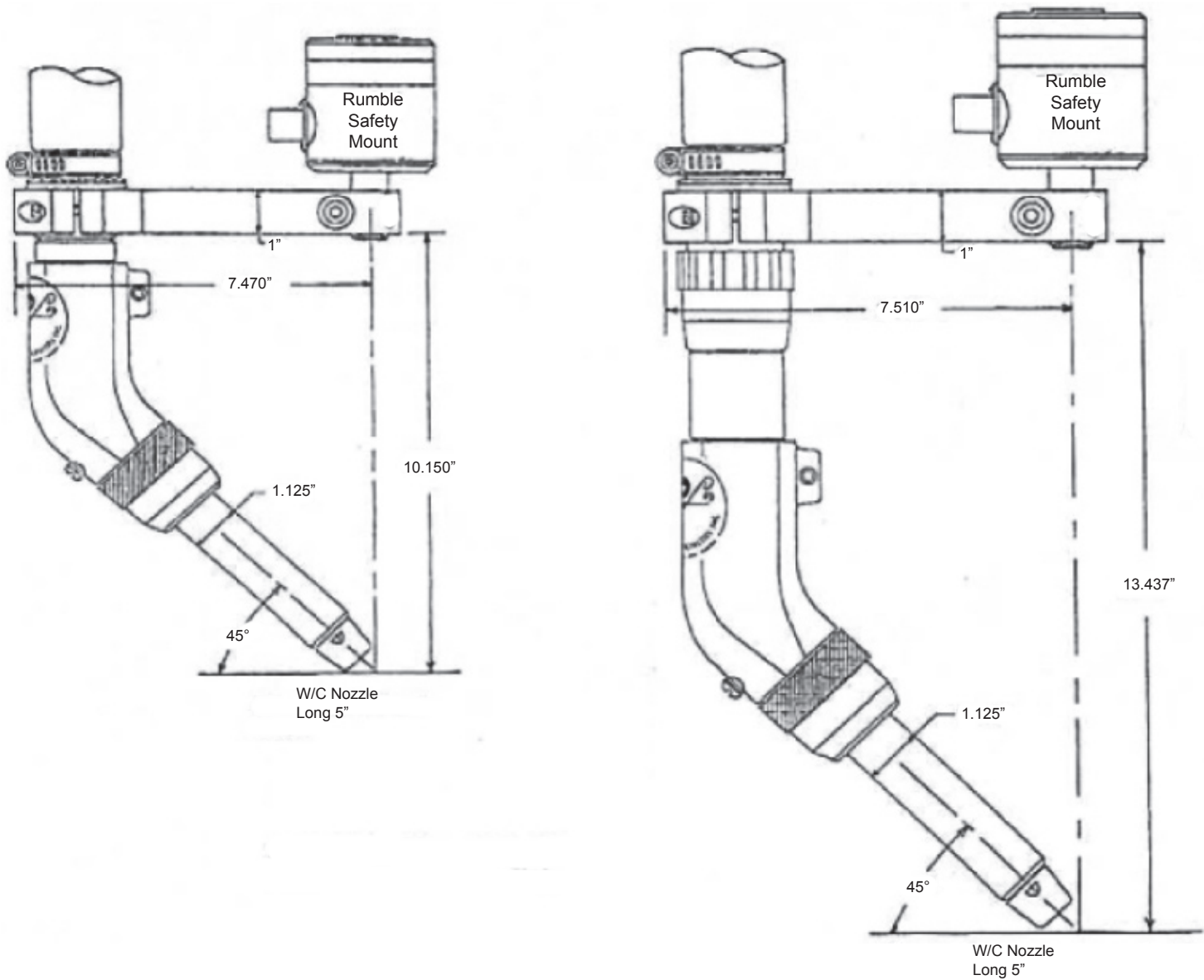
10° Mounting Arms 40831 & 40821 - 55° Water-Cooled Curved Gun
Intermediate 4" & Long 5" Water-Cooled Nozzles



Ordering Information - Safety Mount

CODE NO.	DESCRIPTION
40501	Light Duty Rumble Safety Mount
40519	Medium Duty Rumble Safety Mount
40520	Heavy Duty Rumble

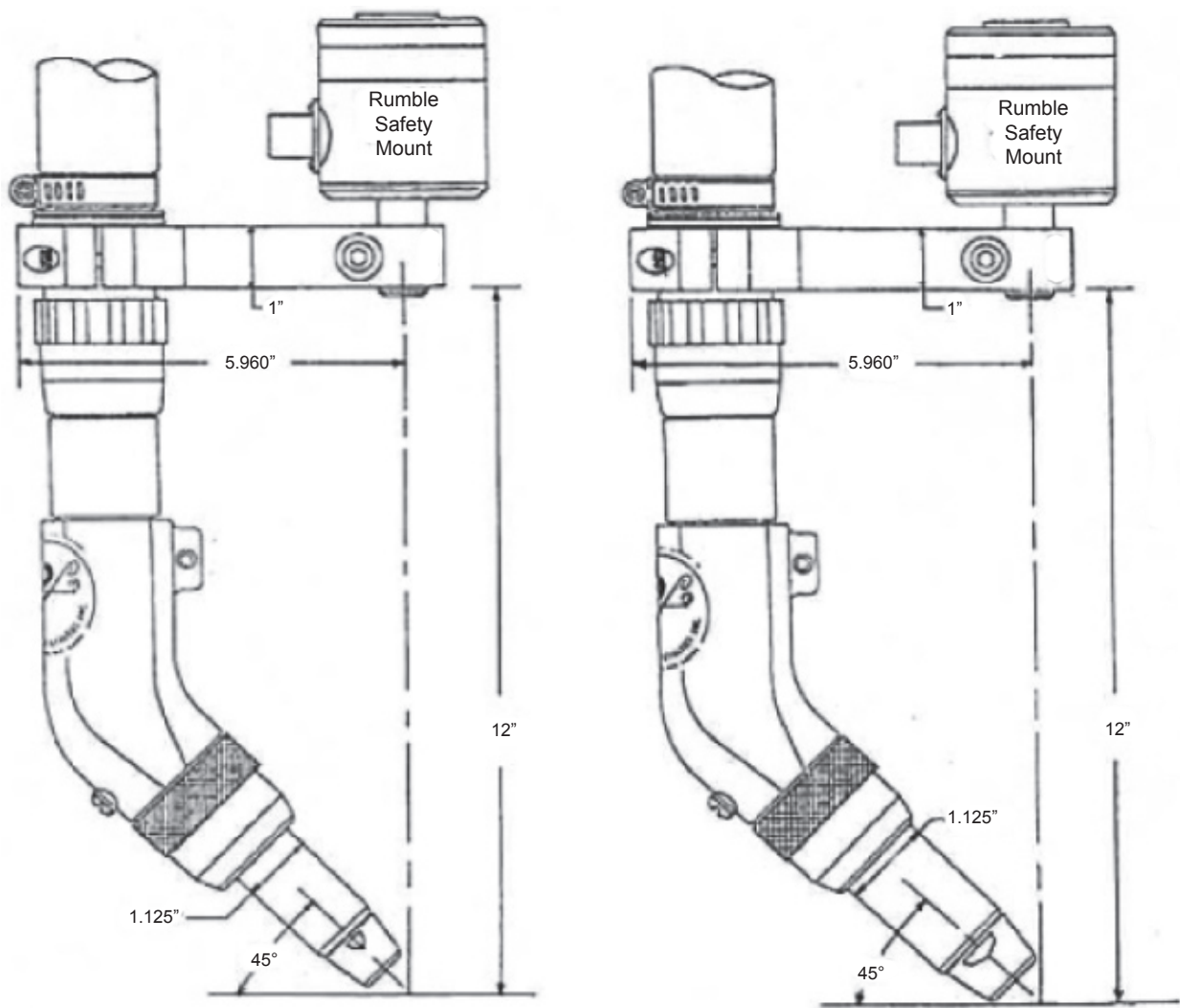
REMOTE MOUNT MACHINE BARREL LAYOUT
Straight Mounting Arms 40849 & 40836 - 45° Water-Cooled Curved Gun
Long 5" Water-Cooled Nozzle



Ordering Information - Safety Mount

CODE NO.	DESCRIPTION
40501	Light Duty Rumble Safety Mount
40519	Medium Duty Rumble Safety Mount
40520	Heavy Duty Rumble

REMOTE MOUNT MACHINE BARREL LAYOUT
Straight Mounting Arm 40834 - 45° Water-Cooled Curved Gun
Short 3" & Series A3" Water-Cooled Nozzles



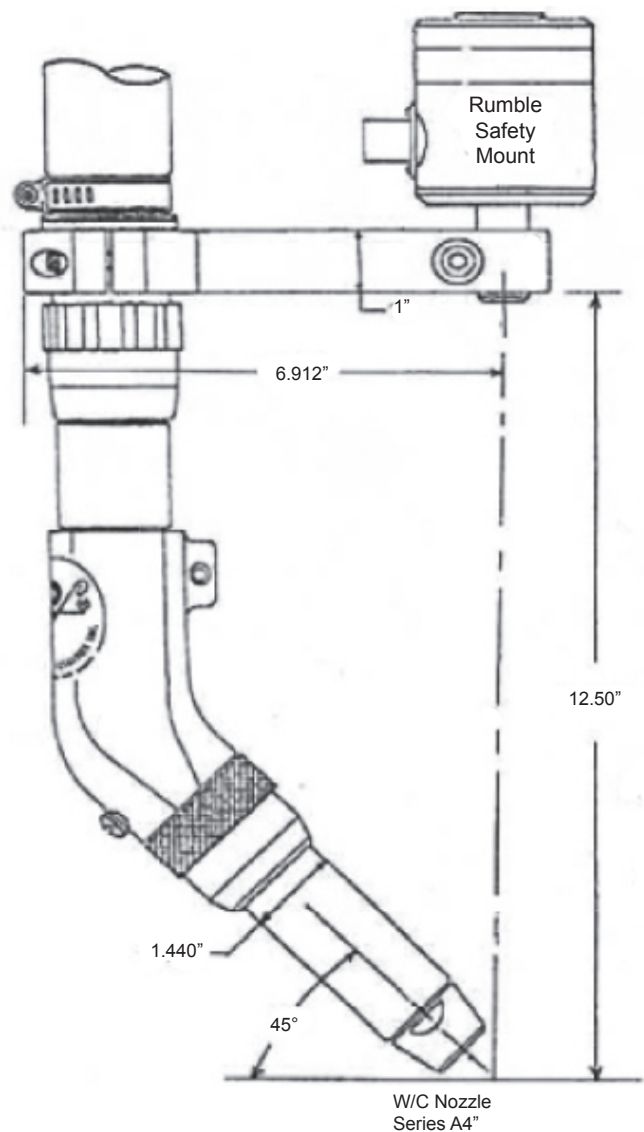
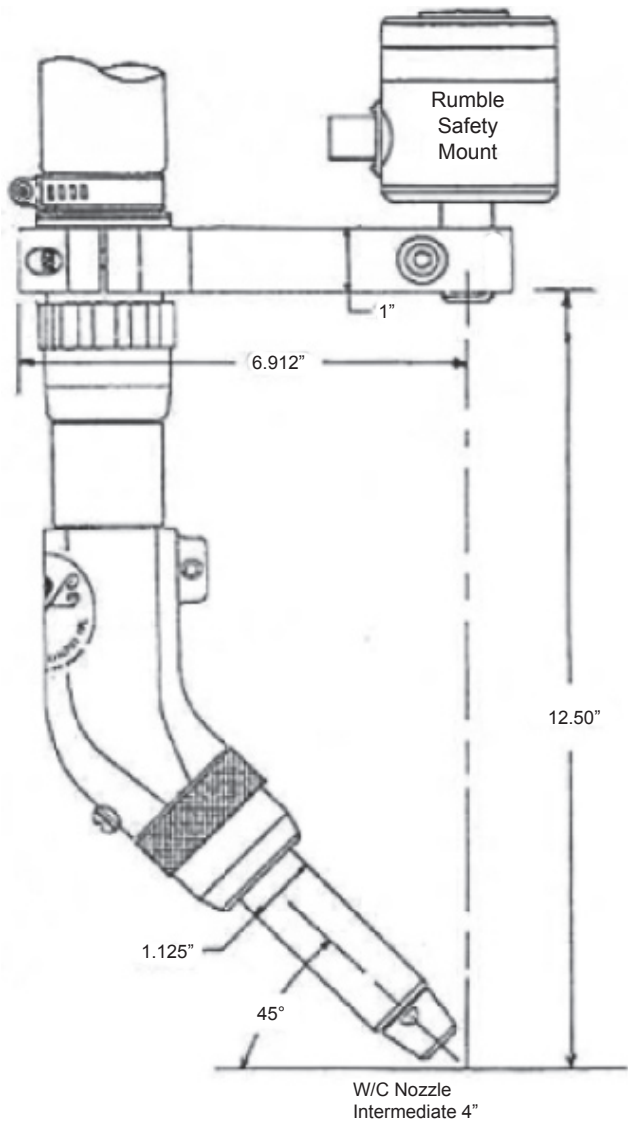
Ordering Information - Safety Mount

CODE NO.	DESCRIPTION
40501	Light Duty Rumble Safety Mount
40519	Medium Duty Rumble Safety Mount
40520	Heavy Duty Rumble

REMOTE MOUNT MACHINE BARREL LAYOUT

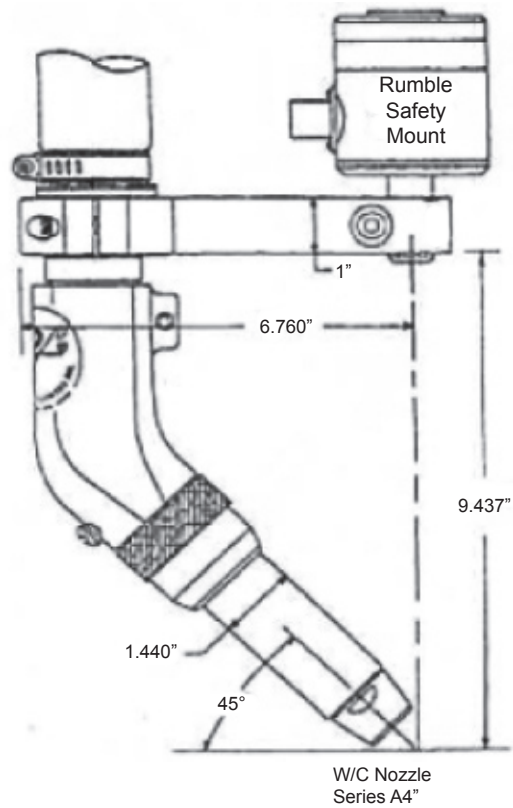
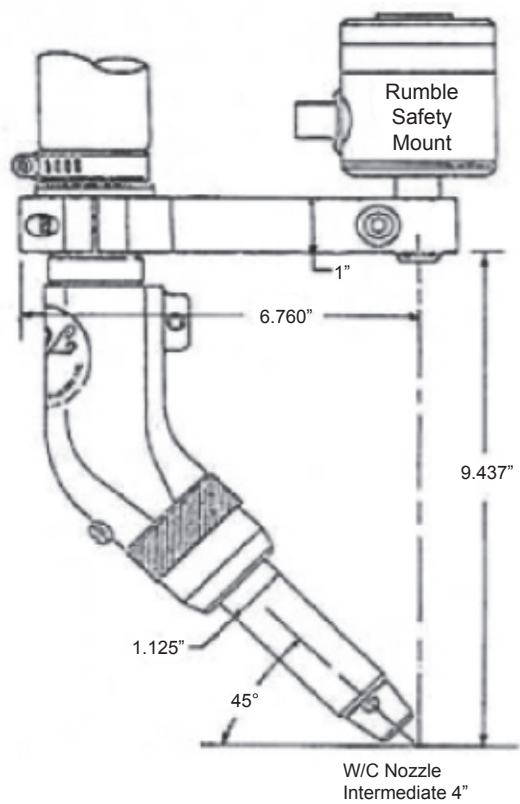
Straight Mounting Arm 40835 - 45° Water-Cooled Curved Gun

Intermediate 4" & Series A4" Water-Cooled Nozzles



Ordering Information - Safety Mount	
CODE NO.	DESCRIPTION
40501	Light Duty Rumble Safety Mount
40519	Medium Duty Rumble Safety Mount
40520	Heavy Duty Rumble

REMOTE MOUNT MACHINE BARREL LAYOUT
Straight Mounting Arm 40848 - 45° Water-Cooled Curved Gun
Intermediate 4" & Series A4" Water-Cooled Nozzles



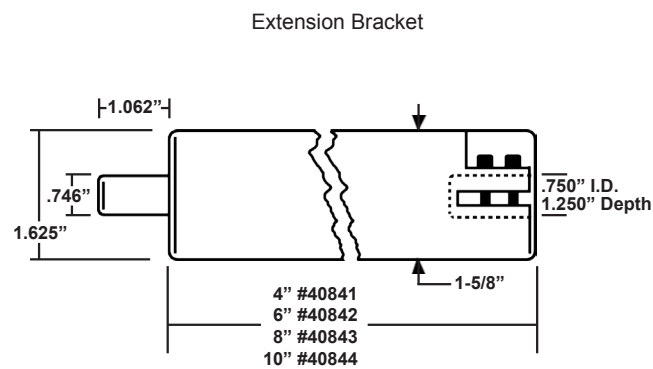
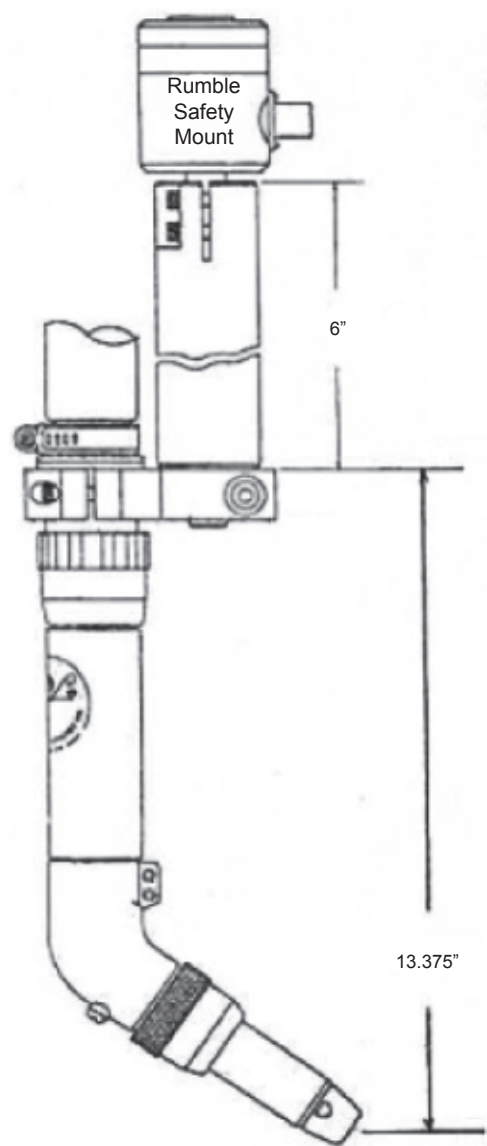
Ordering Information - Safety Mount

CODE NO.	DESCRIPTION
40501	Light Duty Rumble Safety Mount
40519	Medium Duty Rumble Safety Mount
40520	Heavy Duty Rumble

REMOTE MOUNT MACHINE BARREL LAYOUT

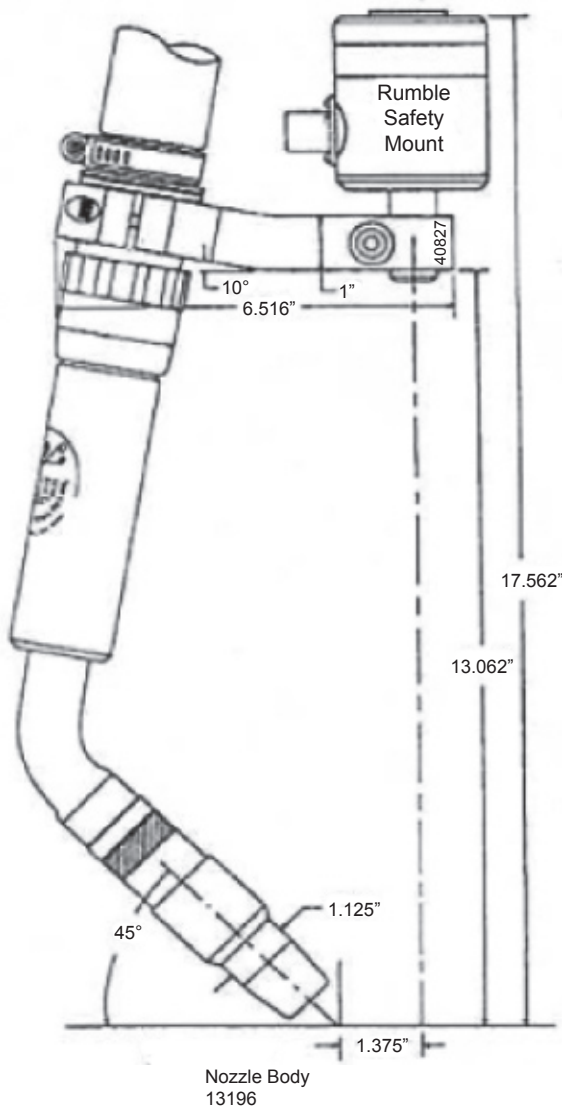
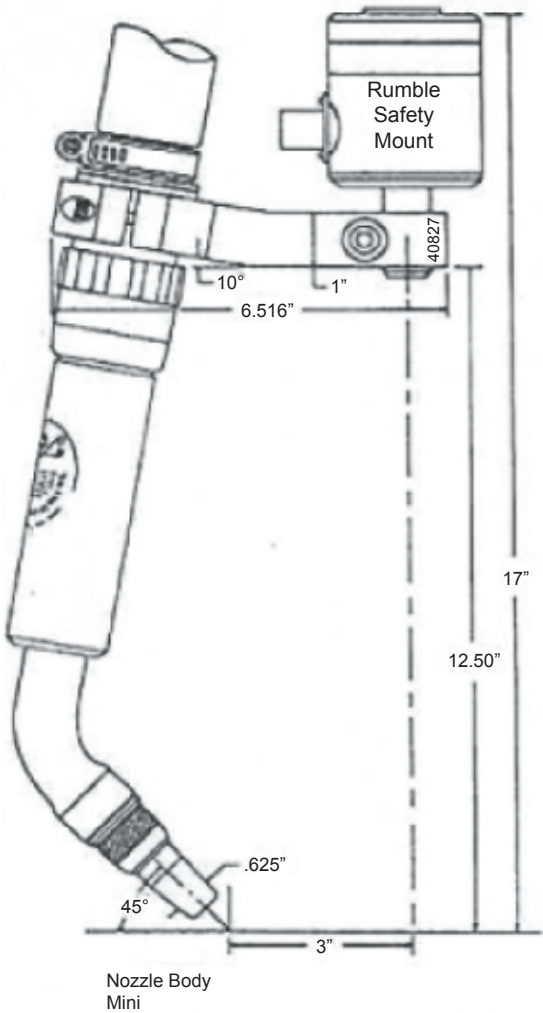
Straight Mounting Arm 40837 - 55° Water-Cooled Curved Gun

Extension Bar 40842



Ordering Information - Safety Mount	
CODE NO.	DESCRIPTION
40501	Light Duty Rumble Safety Mount
40519	Medium Duty Rumble Safety Mount
40520	Heavy Duty Rumble

REMOTE MOUNT MACHINE BARREL LAYOUT
10° Mounting Arm 40827 - 55° Water-Cooled Curved Gun
13196 Nozzle Body & Mini Nozzle Body



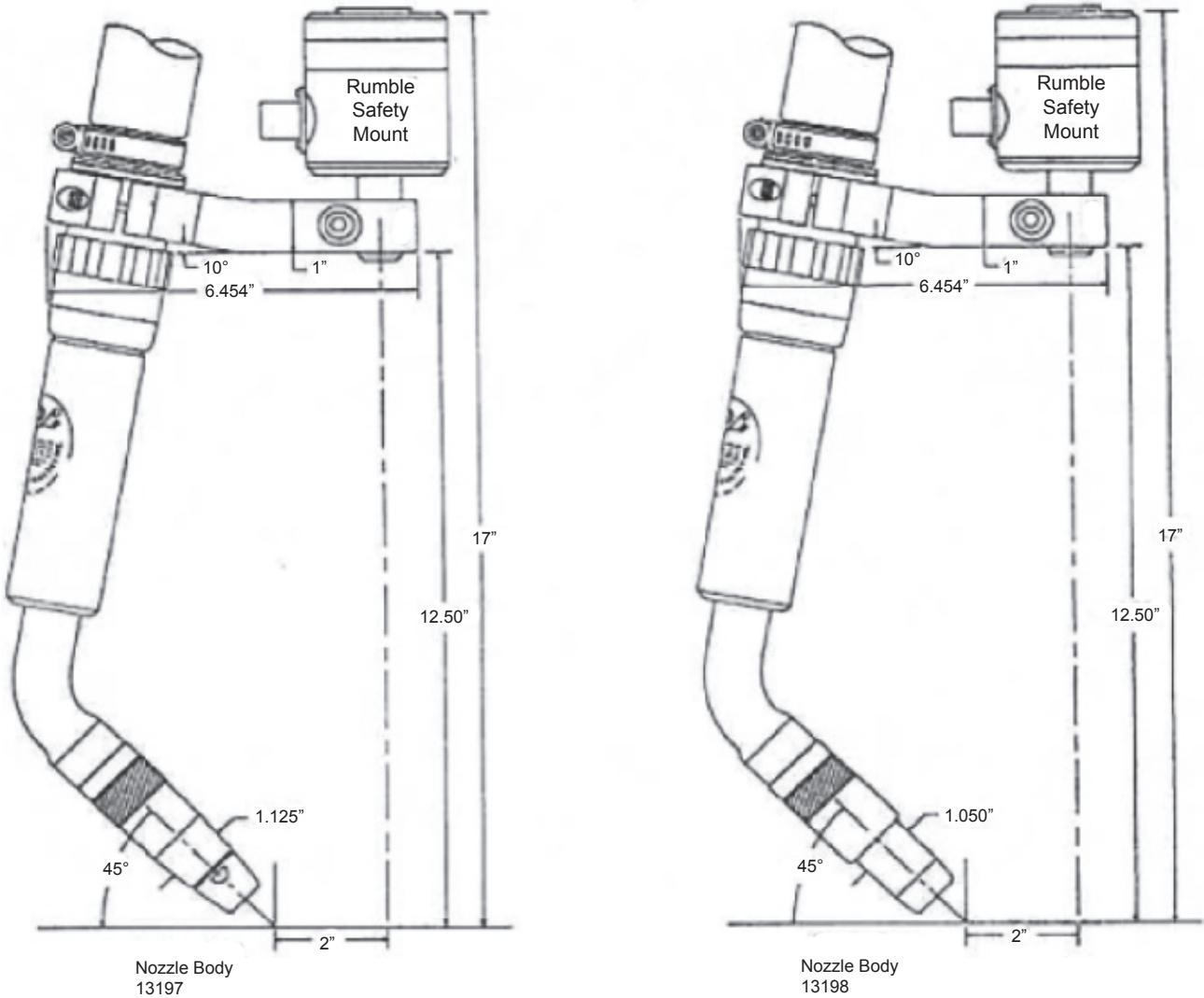
Ordering Information - Safety Mount

CODE NO.	DESCRIPTION
40501	Light Duty Rumble Safety Mount
40519	Medium Duty Rumble Safety Mount
40520	Heavy Duty Rumble

REMOTE MOUNT MACHINE BARREL LAYOUT

10° Mounting Arm 40826 - 55° Water-Cooled Curved Gun

Nozzle Bodies 13197 & 13198



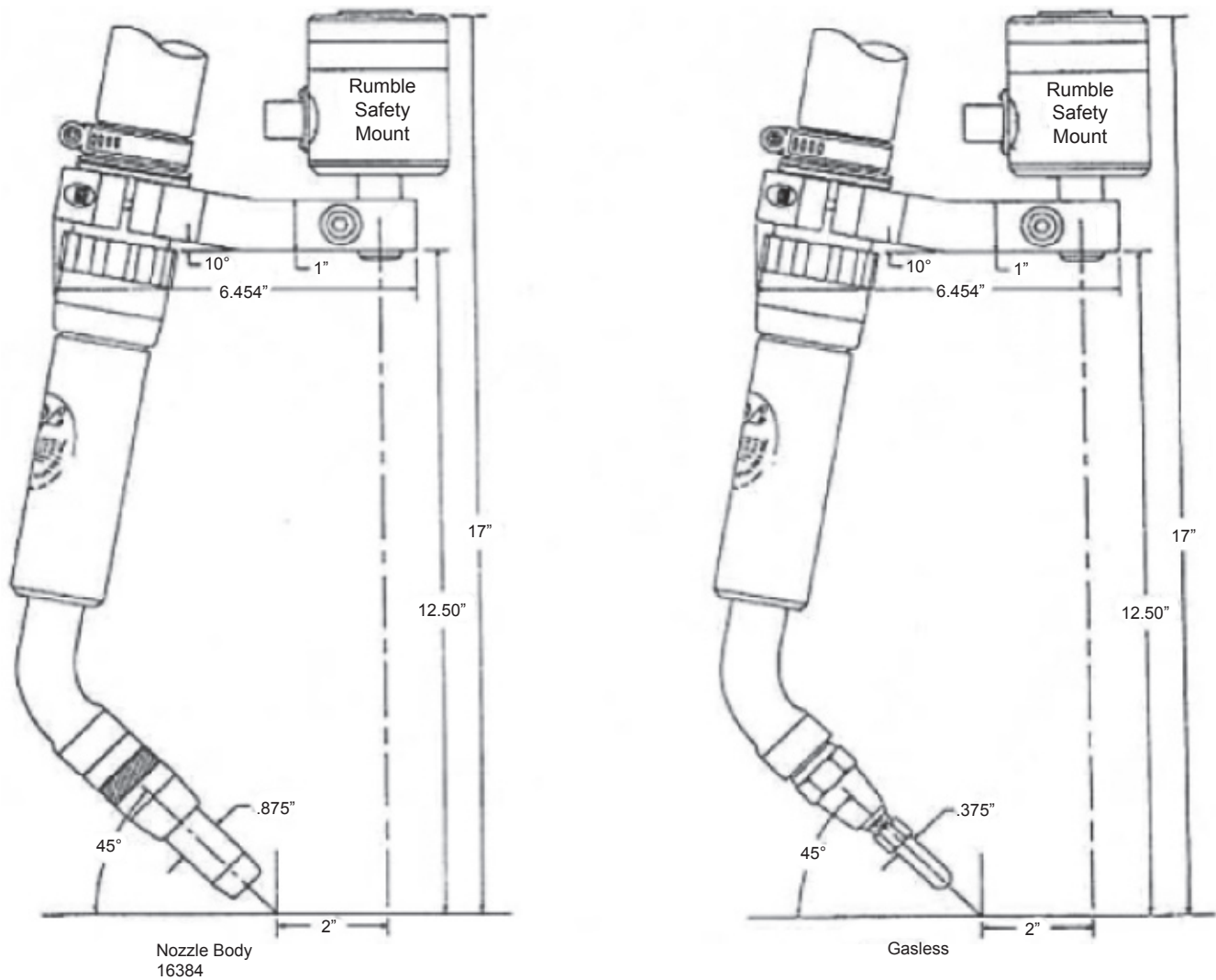
Ordering Information - Safety Mount

CODE NO.	DESCRIPTION
40501	Light Duty Rumble Safety Mount
40519	Medium Duty Rumble Safety Mount
40520	Heavy Duty Rumble

REMOTE MOUNT MACHINE BARREL LAYOUT

10° Mounting Arm 40826 - 55° Water-Cooled Curved Gun

13196 Nozzle Body & Mini Nozzle Body

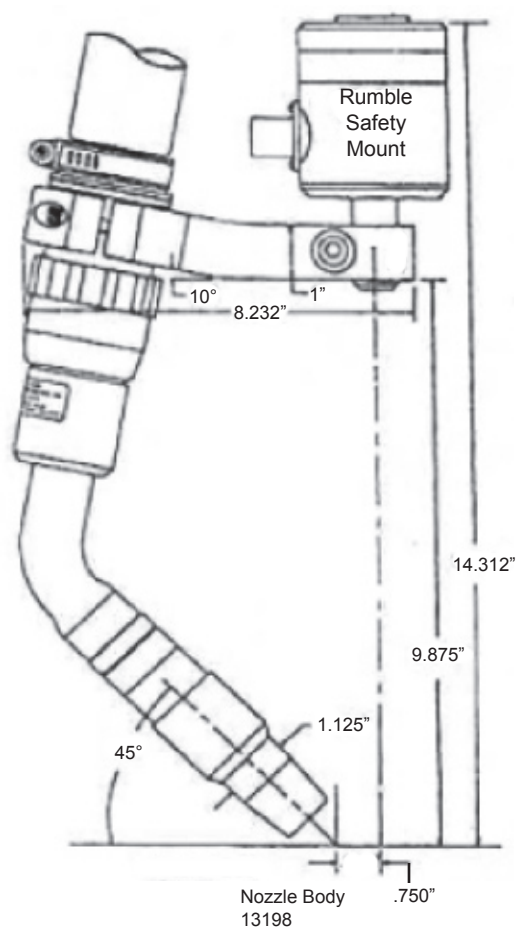
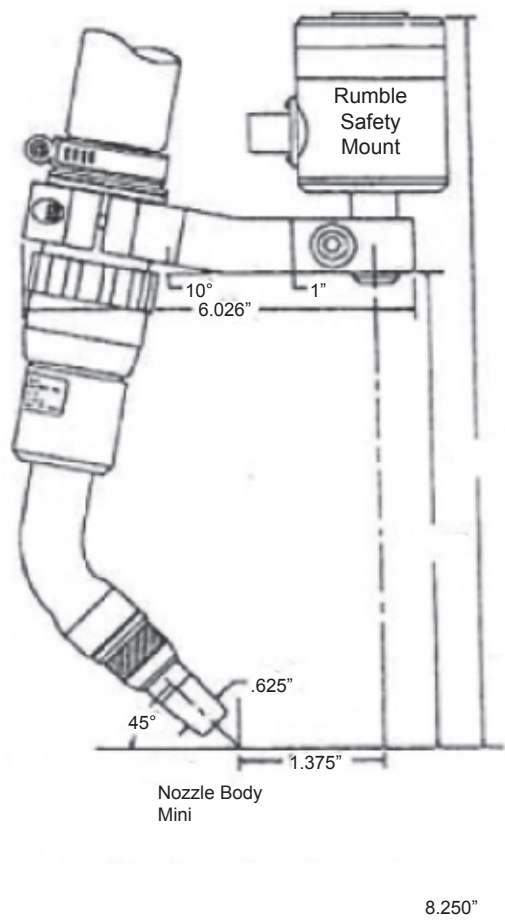


Ordering Information - Safety Mount	
CODE NO.	DESCRIPTION
40501	Light Duty Rumble Safety Mount
40519	Medium Duty Rumble Safety Mount
40520	Heavy Duty Rumble

REMOTE MOUNT MACHINE BARREL LAYOUT

10° Mounting Arms 40830 & 40829 - 55° Water-Cooled Curved Gun

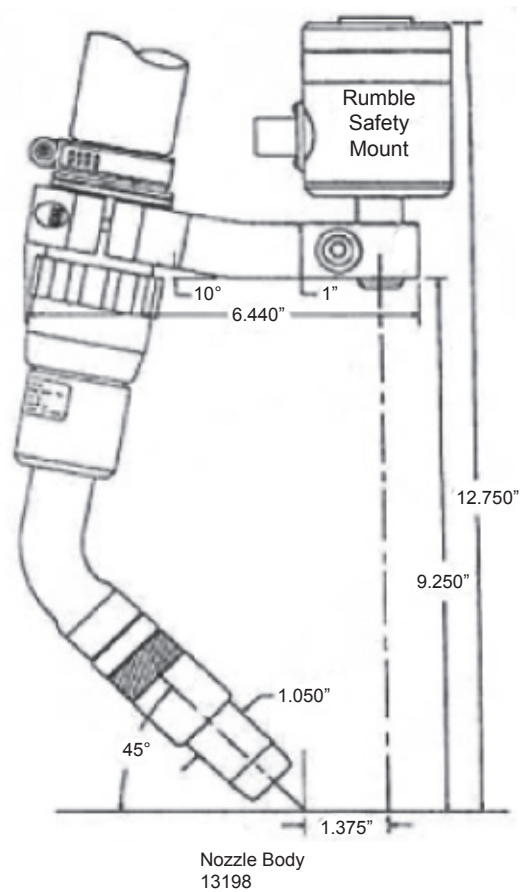
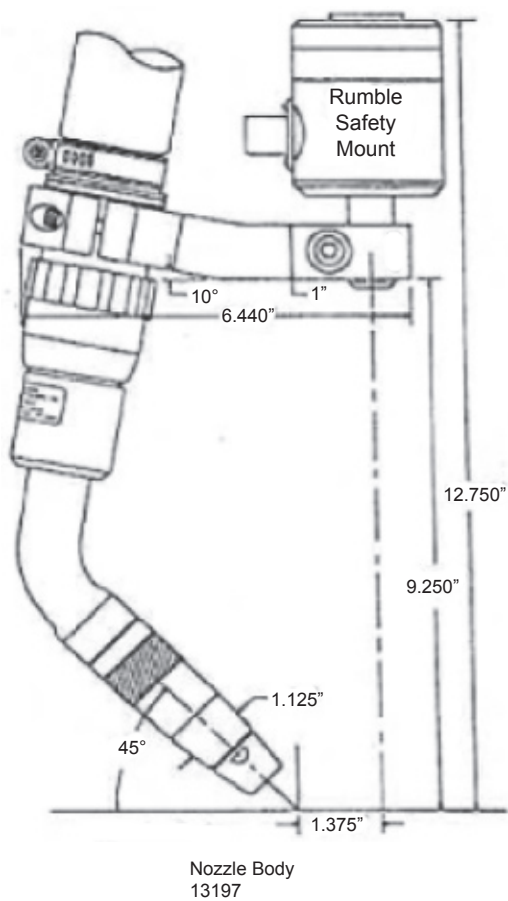
13198 Nozzle Body & Mini Nozzle Body



Ordering Information - Safety Mount

CODE NO.	DESCRIPTION
40501	Light Duty Rumble Safety Mount
40519	Medium Duty Rumble Safety Mount
40520	Heavy Duty Rumble

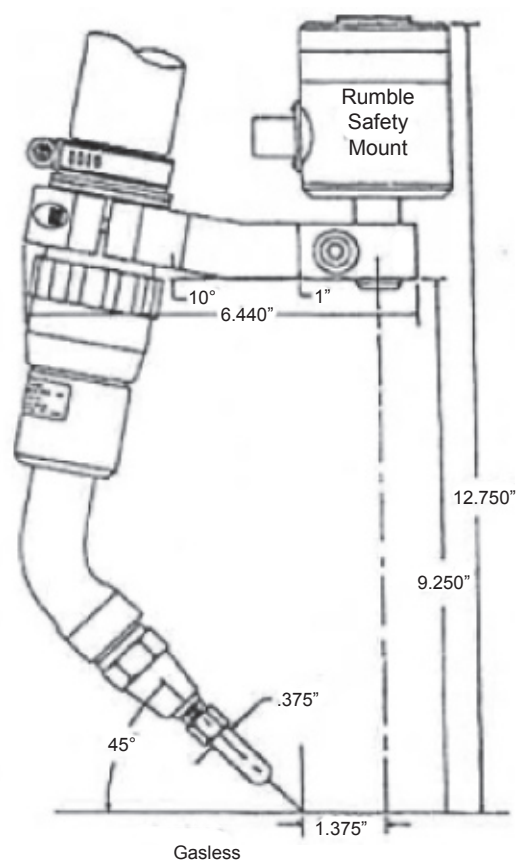
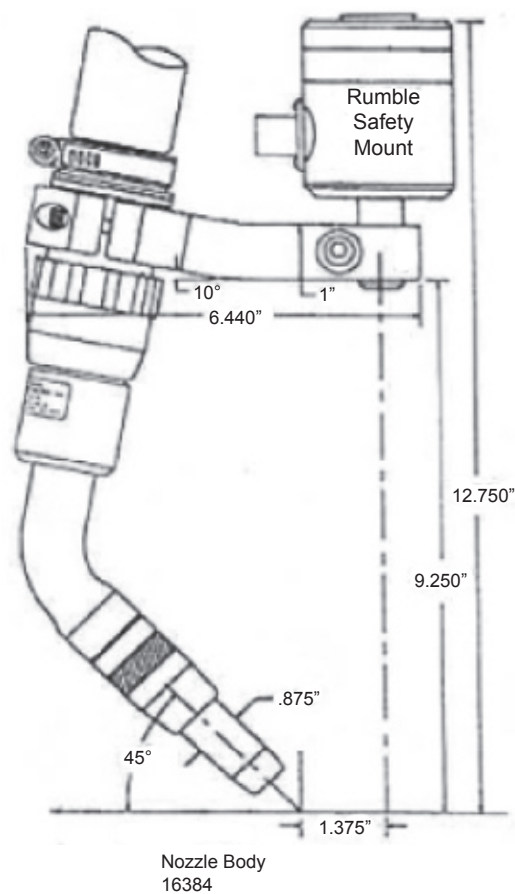
REMOTE MOUNT MACHINE BARREL LAYOUT
10° Mounting Arm 40828 - 55° Water-Cooled Curved Gun
Nozzle Bodies 13197 & 13198



Ordering Information - Safety Mount

CODE NO.	DESCRIPTION
40501	Light Duty Rumble Safety Mount
40519	Medium Duty Rumble Safety Mount
40520	Heavy Duty Rumble

REMOTE MOUNT MACHINE BARREL LAYOUT
10° Mounting Arm 40828 - 55° Water-Cooled Curved Gun
Nozzle Body 16384 & Gasless



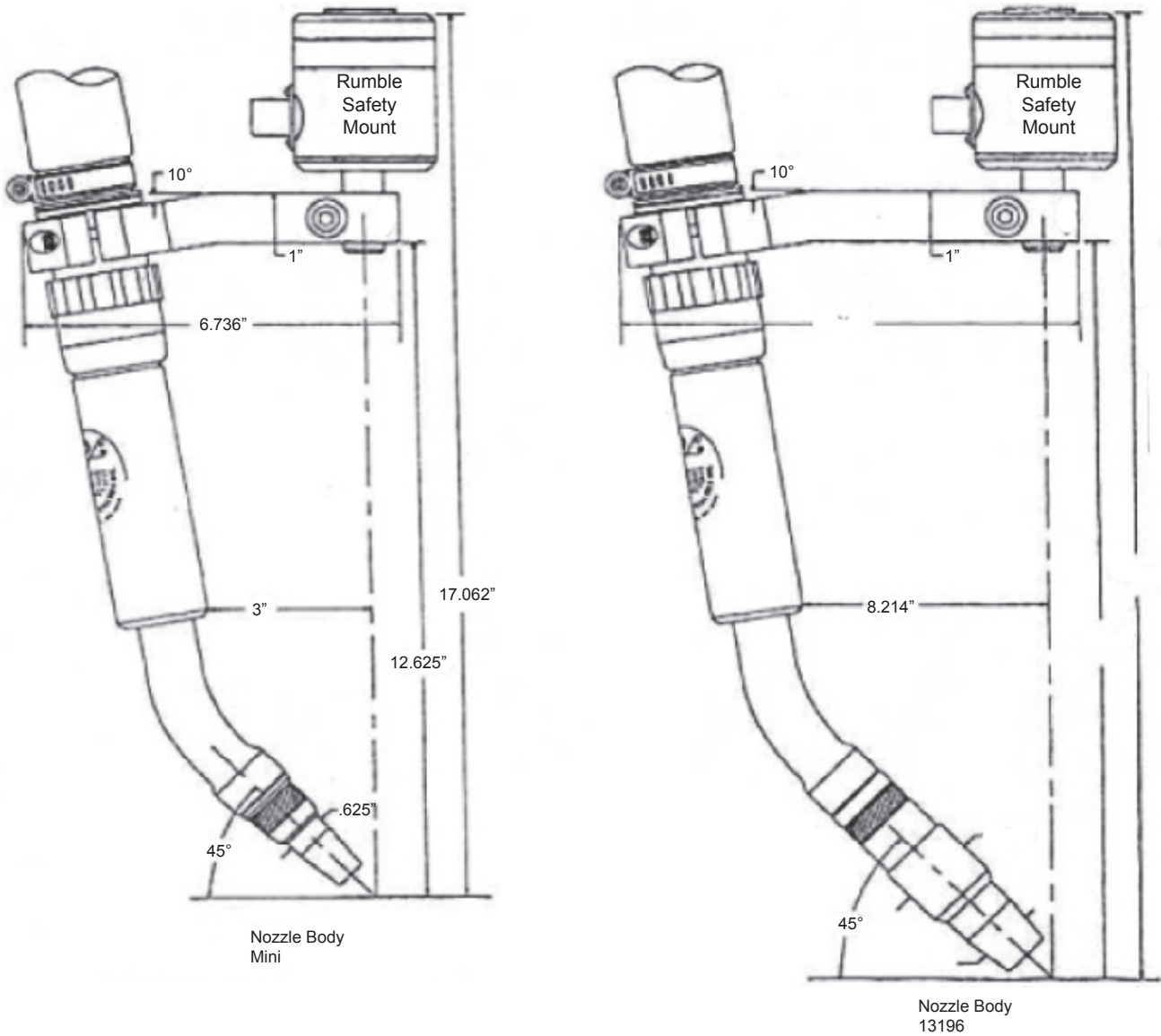
Ordering Information - Safety Mount

CODE NO.	DESCRIPTION
40501	Light Duty Rumble Safety Mount
40519	Medium Duty Rumble Safety Mount
40520	Heavy Duty Rumble

REMOTE MOUNT MACHINE BARREL LAYOUT

10° Mounting Arms 40825 & 40824 - 35° Water-Cooled Curved Gun

Nozzle Bodies 13196 & Mini

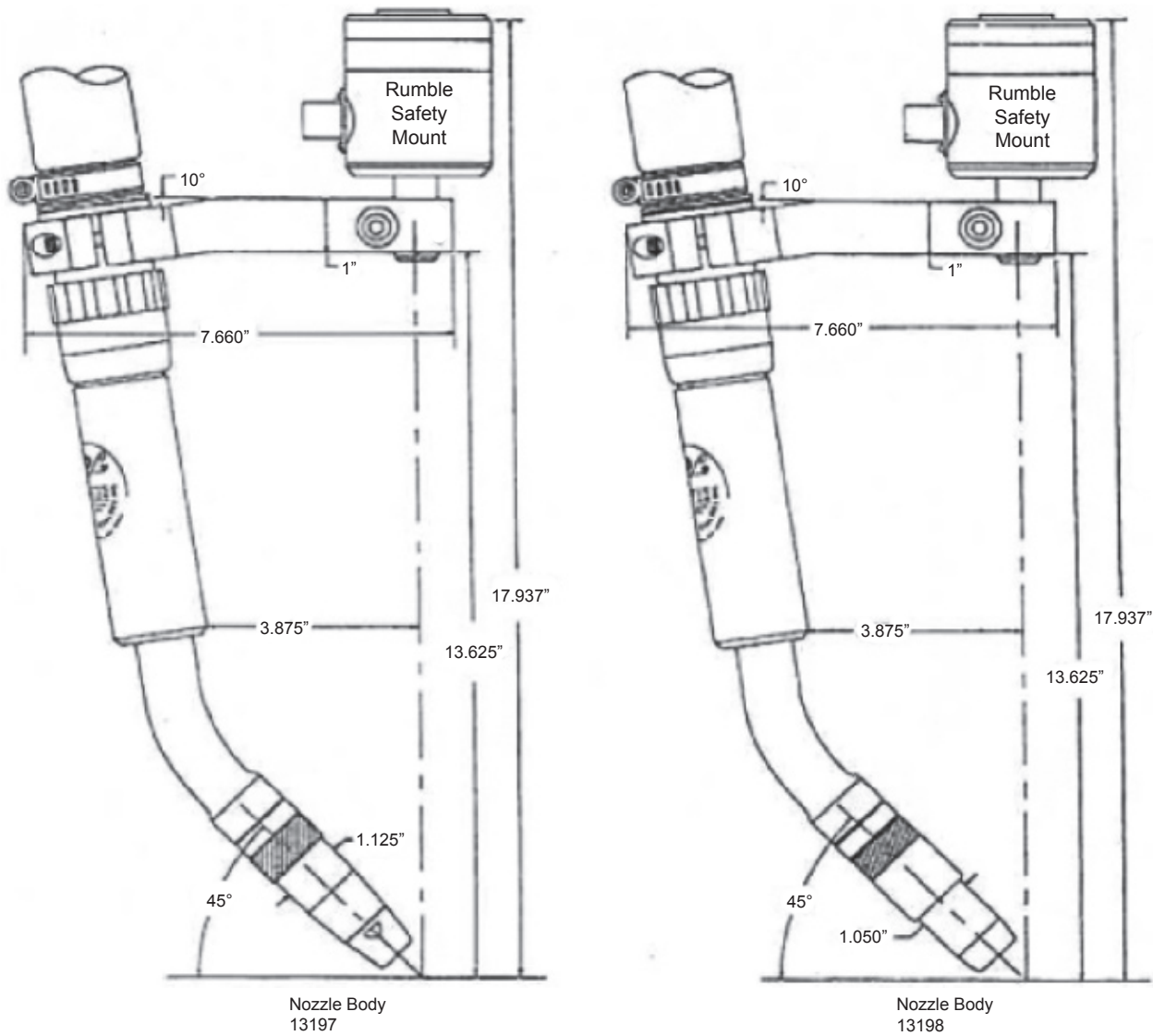


Ordering Information - Safety Mount	
CODE NO.	DESCRIPTION
40501	Light Duty Rumble Safety Mount
40519	Medium Duty Rumble Safety Mount
40520	Heavy Duty Rumble

REMOTE MOUNT MACHINE BARREL LAYOUT

10° Mounting Arm 40823 - 35° Water-Cooled Curved Gun

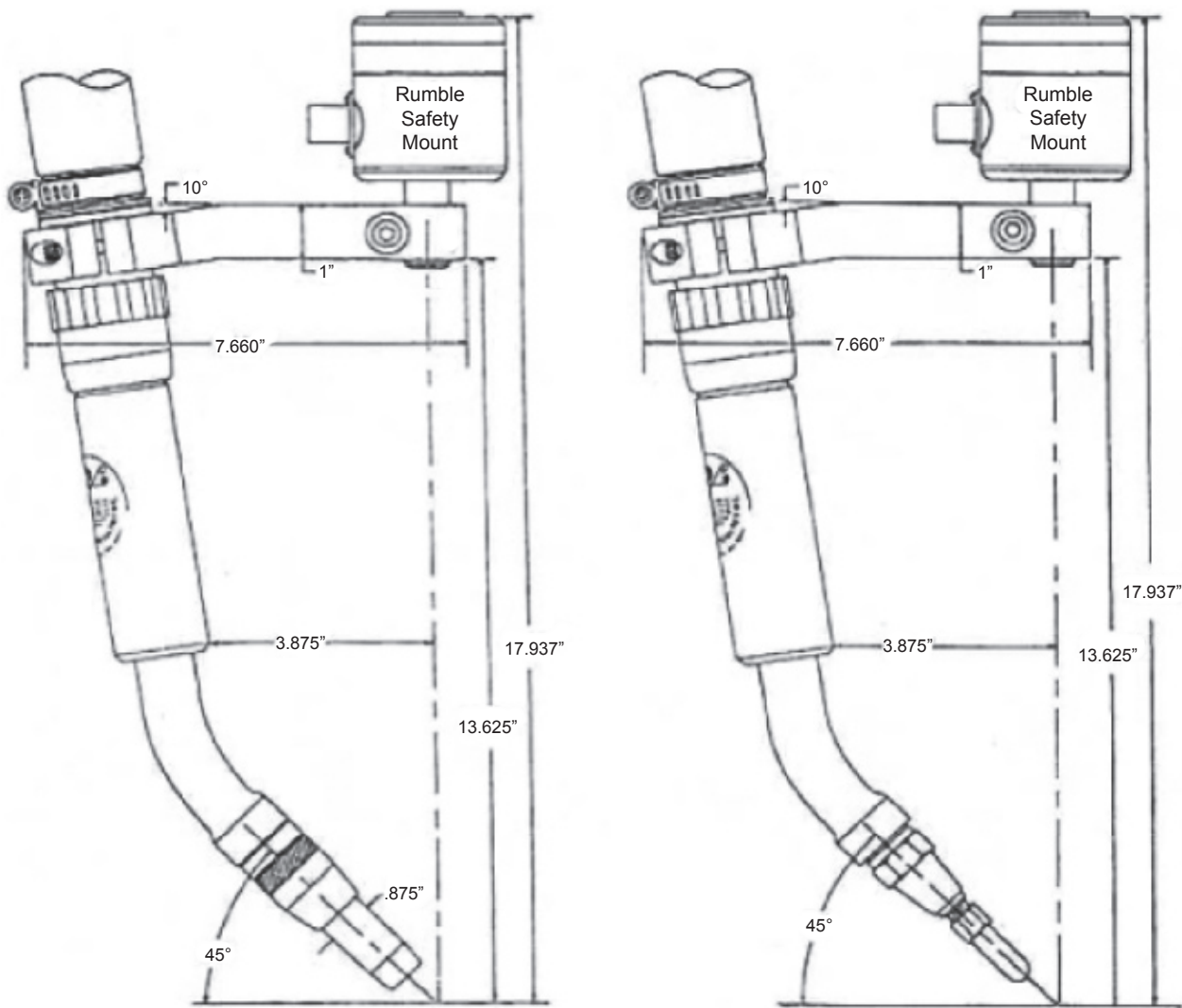
Nozzle Bodies 13197 & 13198



Ordering Information - Safety Mount

CODE NO.	DESCRIPTION
40501	Light Duty Rumble Safety Mount
40519	Medium Duty Rumble Safety Mount
40520	Heavy Duty Rumble

REMOTE MOUNT MACHINE BARREL LAYOUT 10° Mounting Arm 40823 - 35° Water-Cooled Curved Gun Nozzle Bodies 16384 & Gasless

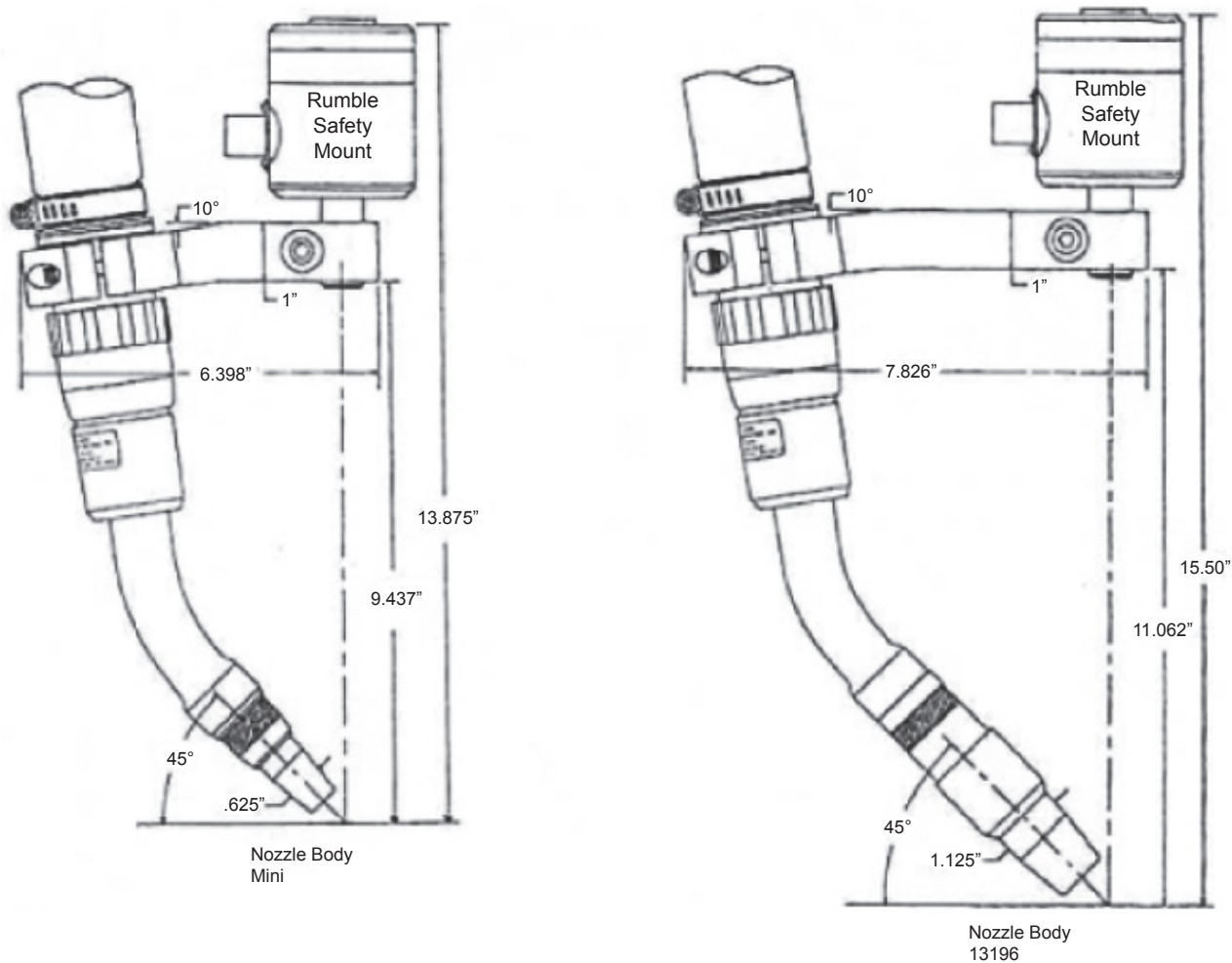


Ordering Information - Safety Mount	
CODE NO.	DESCRIPTION
40501	Light Duty Rumble Safety Mount
40519	Medium Duty Rumble Safety Mount
40520	Heavy Duty Rumble

REMOTE MOUNT MACHINE BARREL LAYOUT

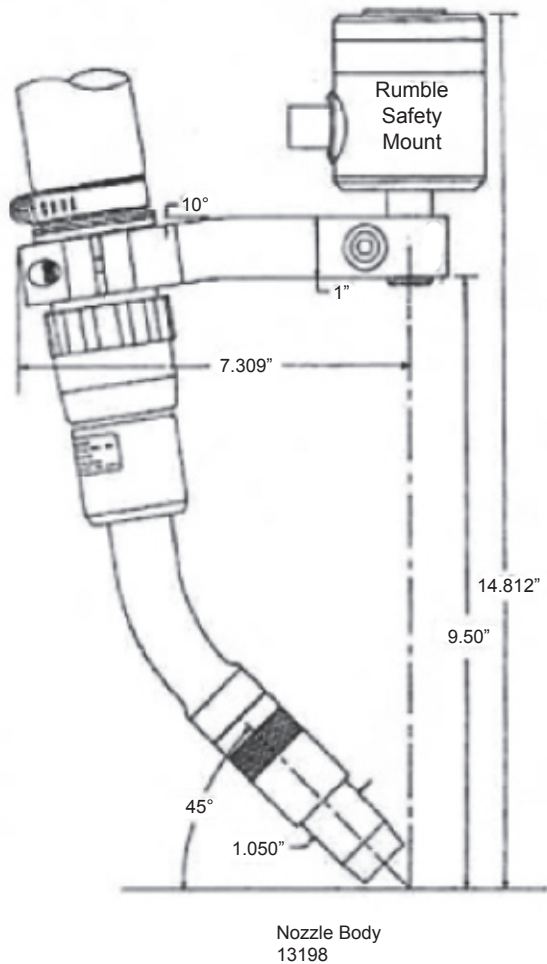
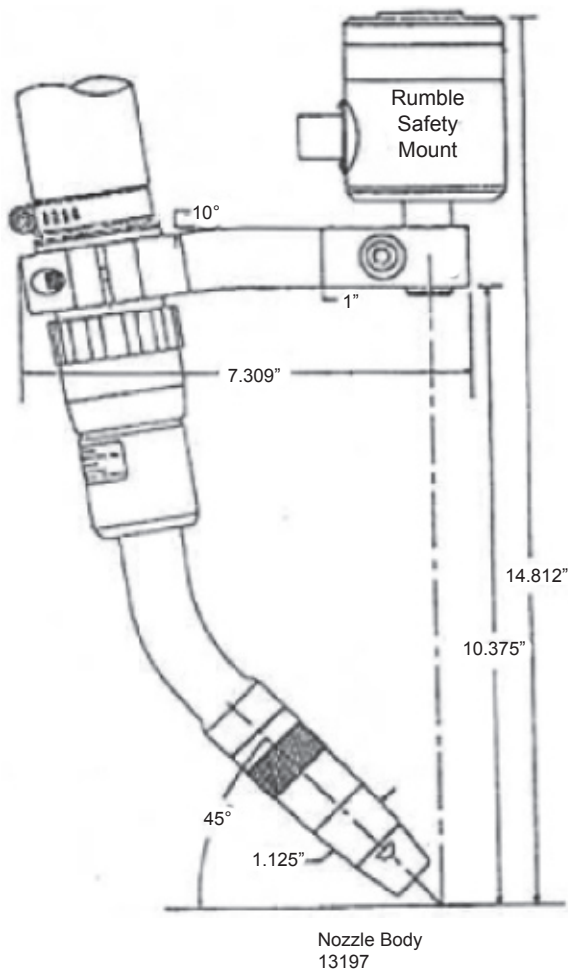
10° Mounting Arms 40534 & 40535 - 35° Water-Cooled Curved Gun

Nozzle Bodies 13196 & Mini



Ordering Information - Safety Mount	
CODE NO.	DESCRIPTION
40501	Light Duty Rumble Safety Mount
40519	Medium Duty Rumble Safety Mount
40520	Heavy Duty Rumble

REMOTE MOUNT MACHINE BARREL LAYOUT
10° Mounting Arm 40533 - 35° Water-Cooled Curved Gun
Nozzle Bodies 13197 & 13198



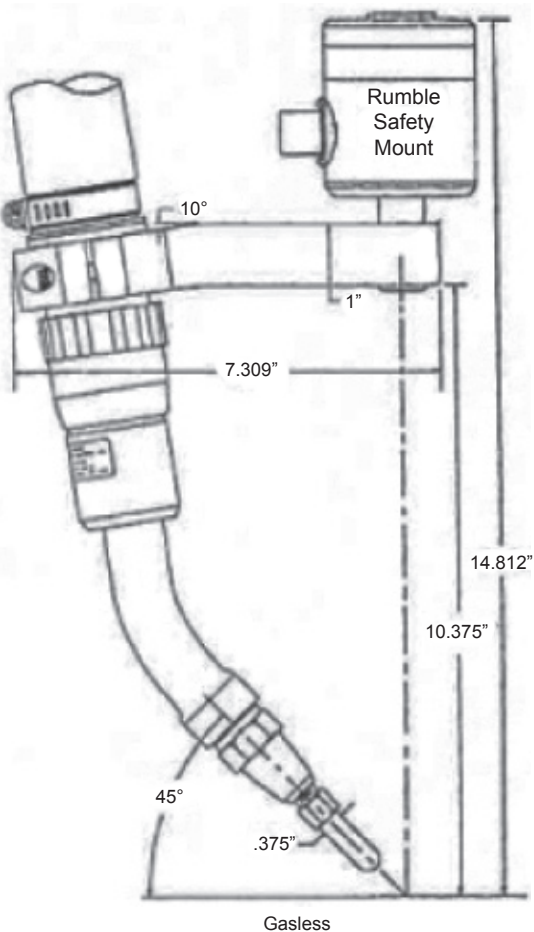
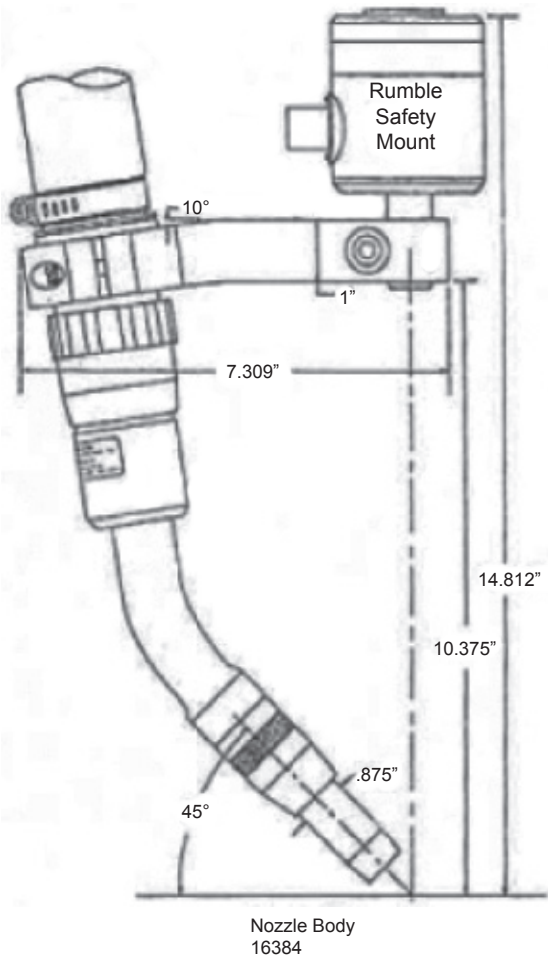
Ordering Information - Safety Mount

CODE NO.	DESCRIPTION
40501	Light Duty Rumble Safety Mount
40519	Medium Duty Rumble Safety Mount
40520	Heavy Duty Rumble

REMOTE MOUNT MACHINE BARREL LAYOUT

10° Mounting Arm 40533 - 35° Water-Cooled Curved Gun

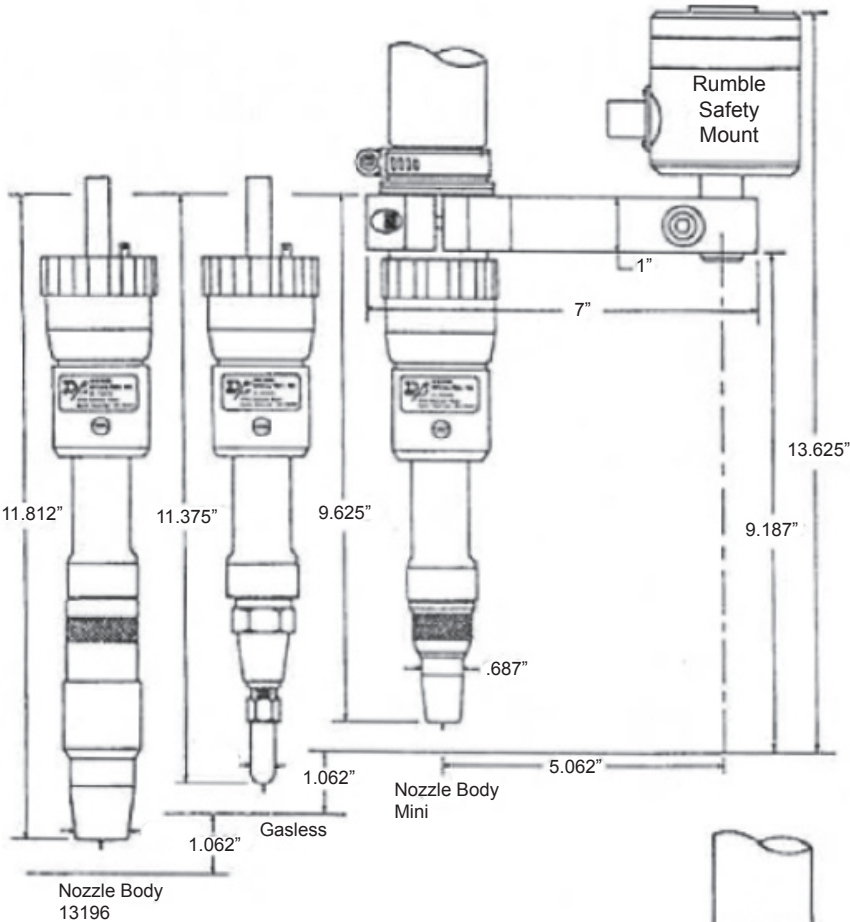
Nozzle Bodies 16384 & Gasless



Ordering Information - Safety Mount

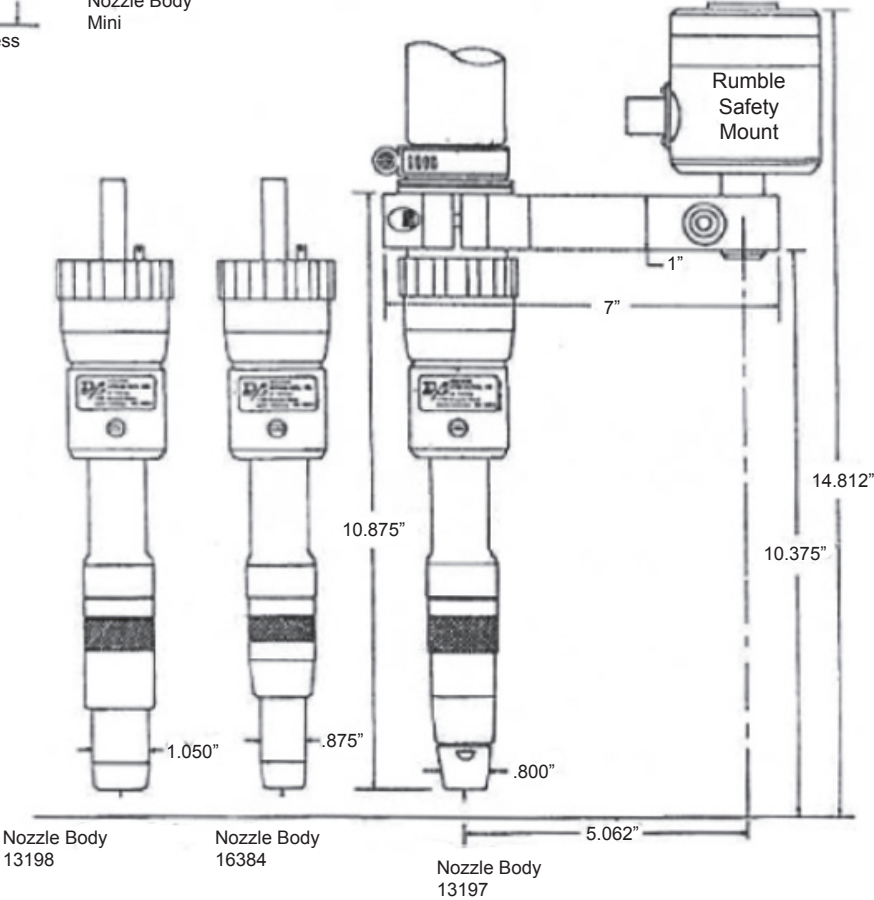
CODE NO.	DESCRIPTION
40501	Light Duty Rumble Safety Mount
40519	Medium Duty Rumble Safety Mount
40520	Heavy Duty Rumble

REMOTE MOUNT MACHINE BARREL LAYOUT Straight Mounting Arm 40805 - 35° Water-Cooled Curved Gun Gasless & Nozzle Bodies 13196, 13197, 13198 & 16384

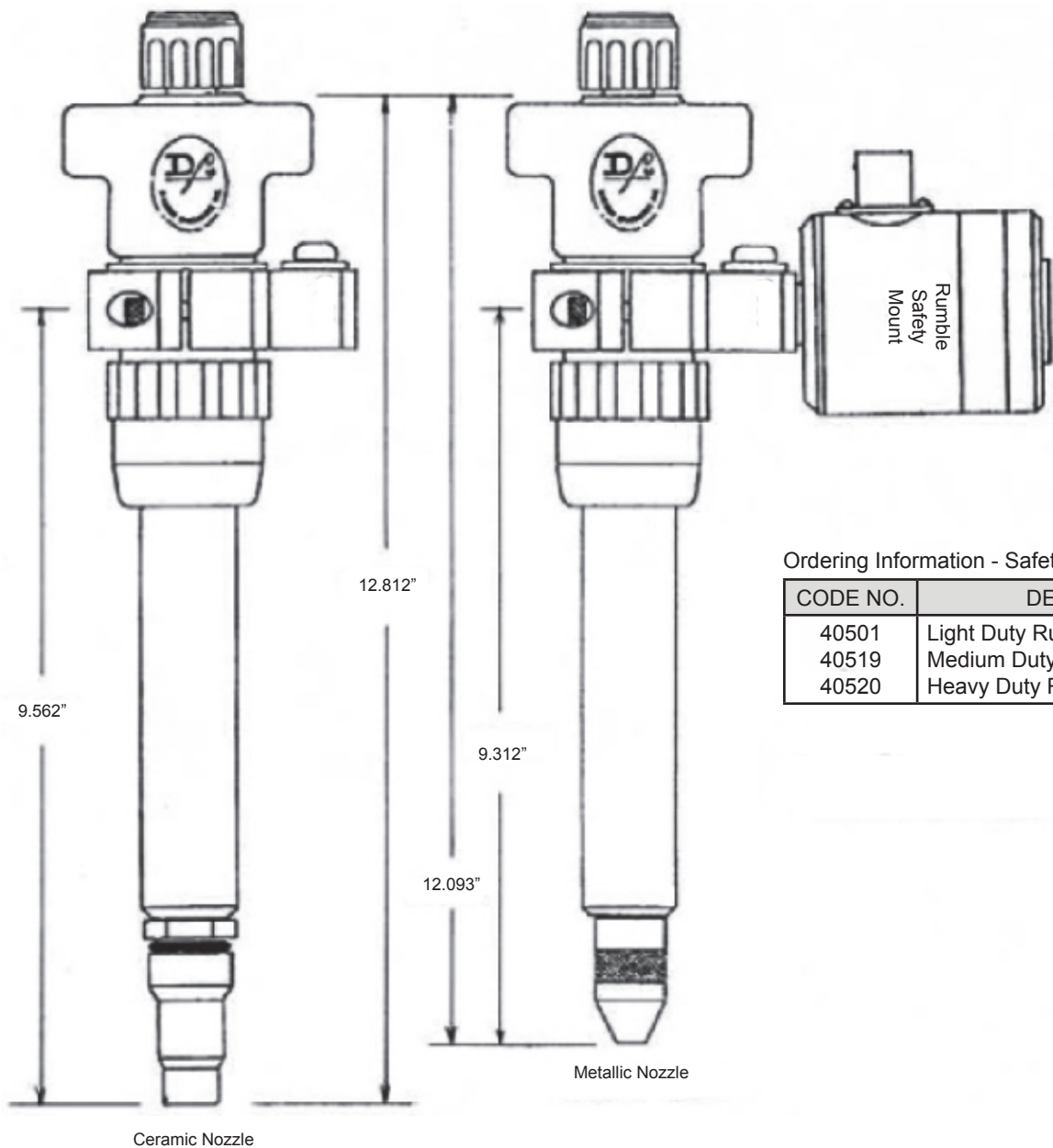


Ordering Information - Safety Mount

CODE NO.	DESCRIPTION
40501	Light Duty Rumble Safety Mount
40519	Medium Duty Rumble Safety Mount
40520	Heavy Duty Rumble



REMOTE MOUNT MACHINE BARREL LAYOUT
TIG Mounting Bracket 40554 - TIG Docking Spool Torch w/ Metallic & Ceramic Nozzle
Nozzle Bodies 16384 & Gasless

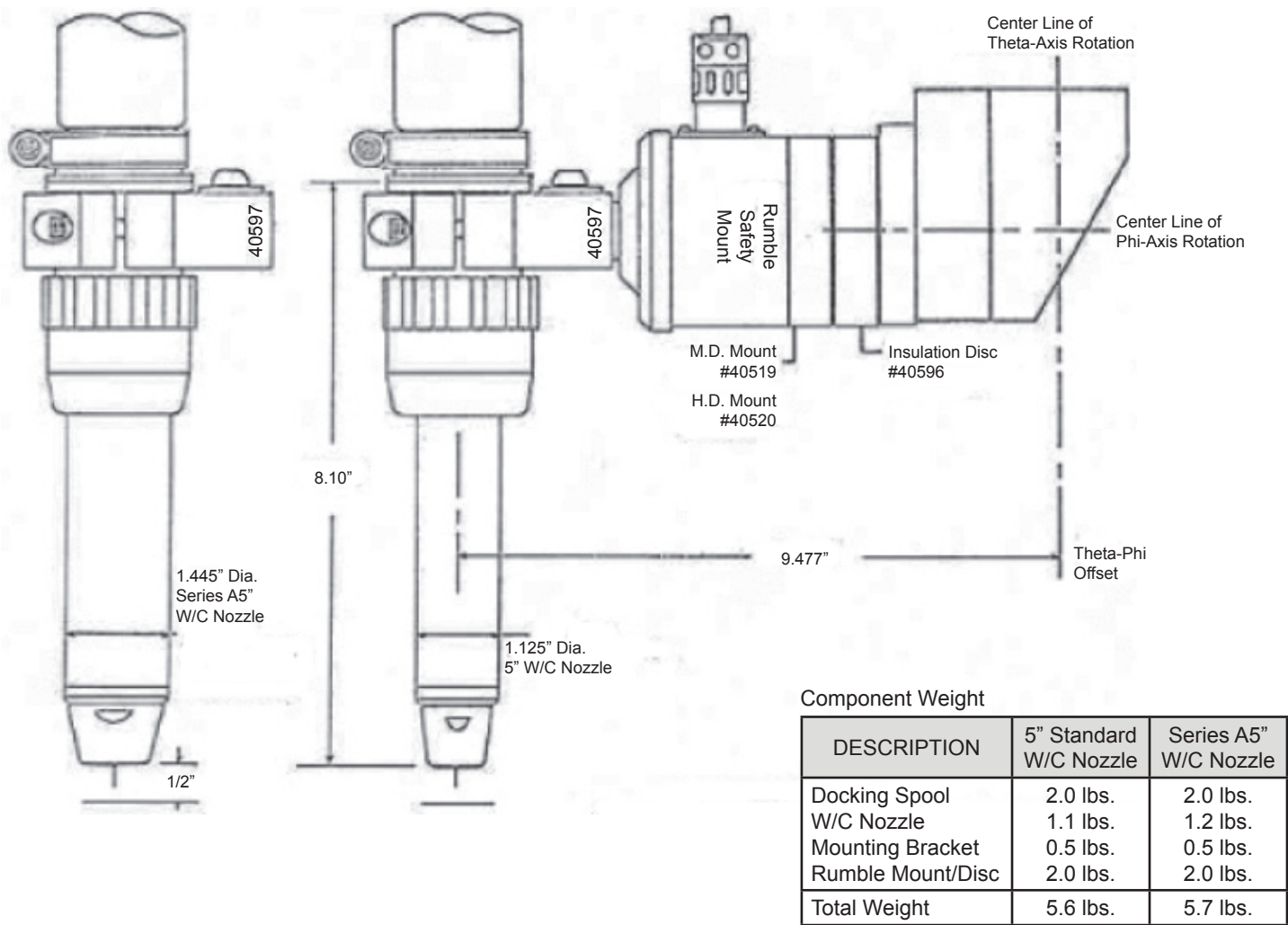


Ordering Information - Safety Mount

CODE NO.	DESCRIPTION
40501	Light Duty Rumble Safety Mount
40519	Medium Duty Rumble Safety Mount
40520	Heavy Duty Rumble

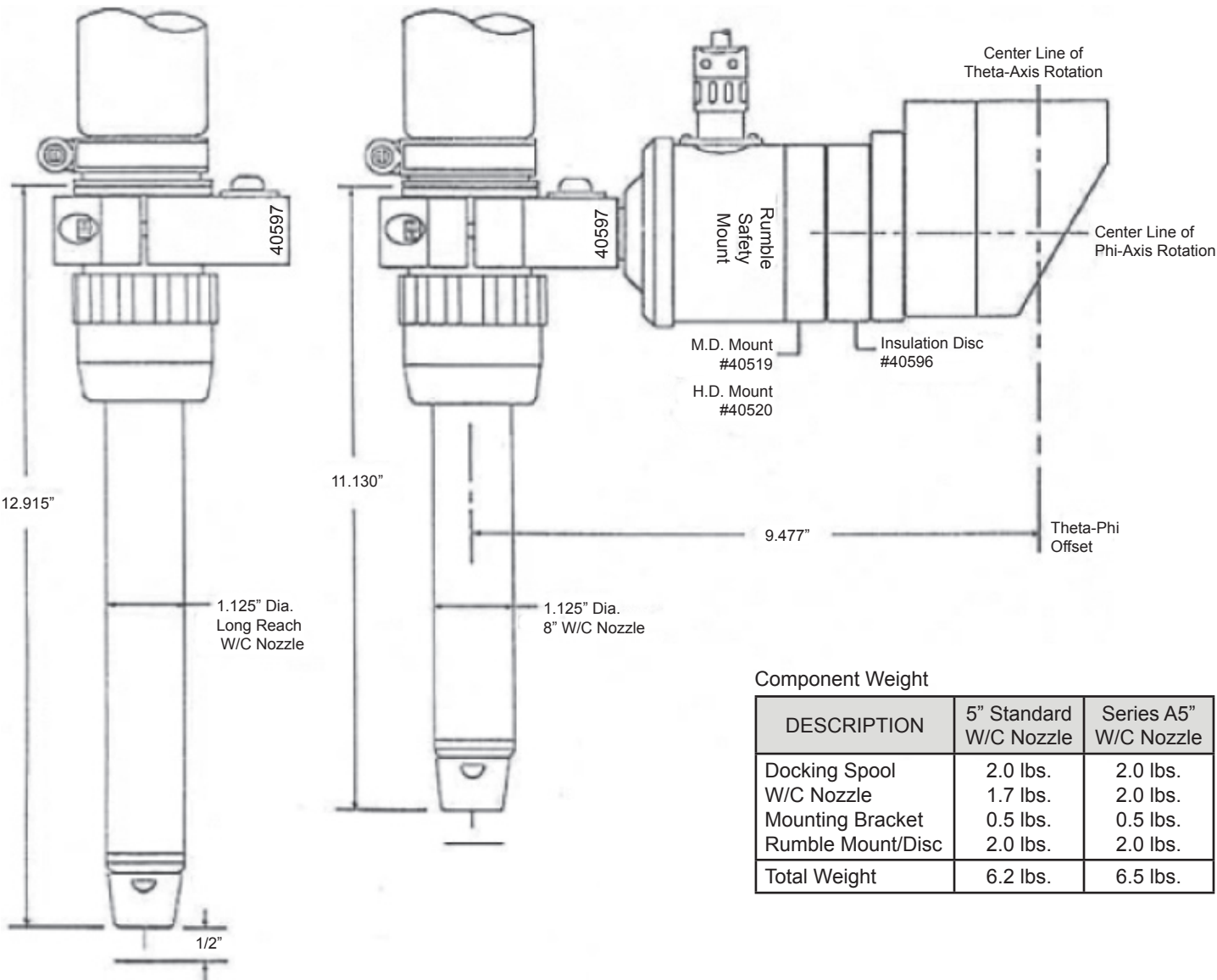
REMOTE MOUNT MACHINE BARREL LAYOUT

Mounting Bracket 40597 - 5" & Series A5" Water-Cooled Nozzles

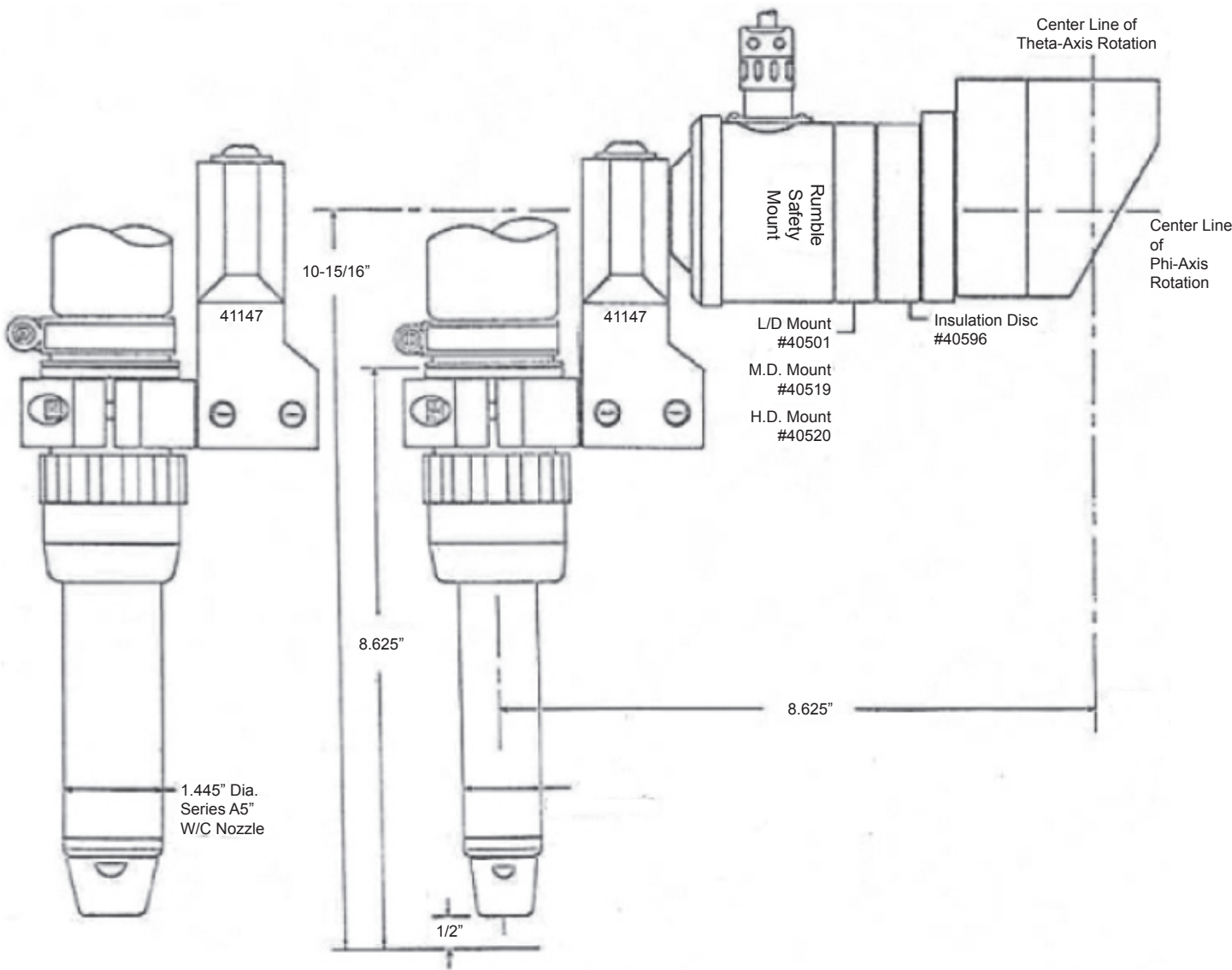


REMOTE MOUNT MACHINE BARREL LAYOUT

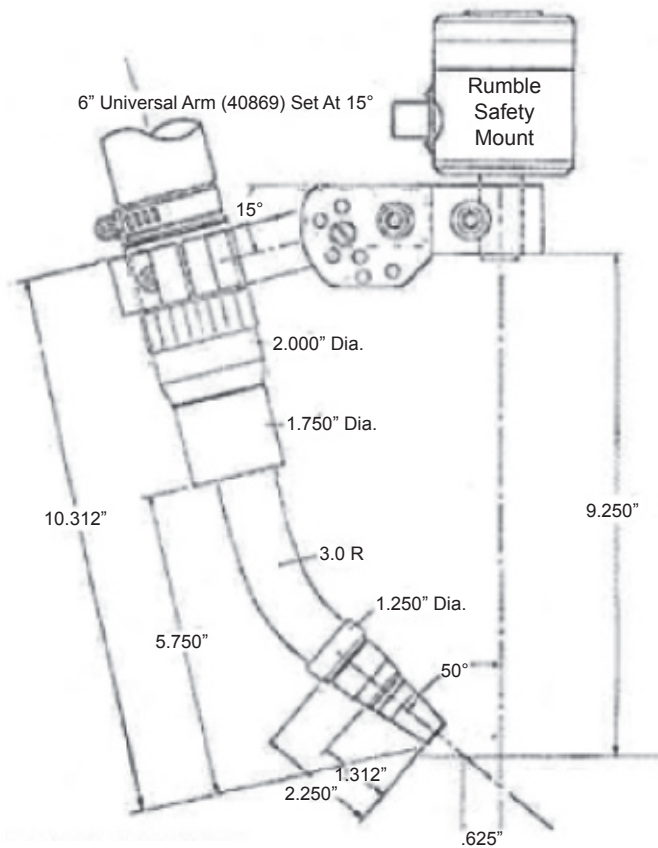
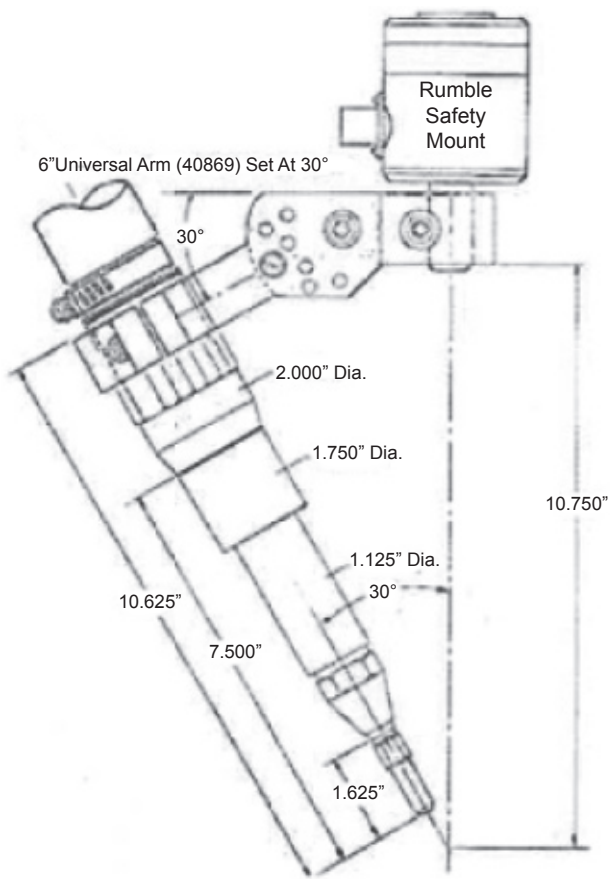
Mounting Bracket 40597 - 8" & Long Reach Water-Cooled Nozzles



REMOTE MOUNT MACHINE BARREL LAYOUT
Mounting Bracket 41147 - 5" & Series A5" Water-Cooled Nozzles



ROBOTIC BARREL/GUN LAYOUT
Mounting Bracket 40869
Models MTW-G (Gasless) & CW-T 35° Short Gun



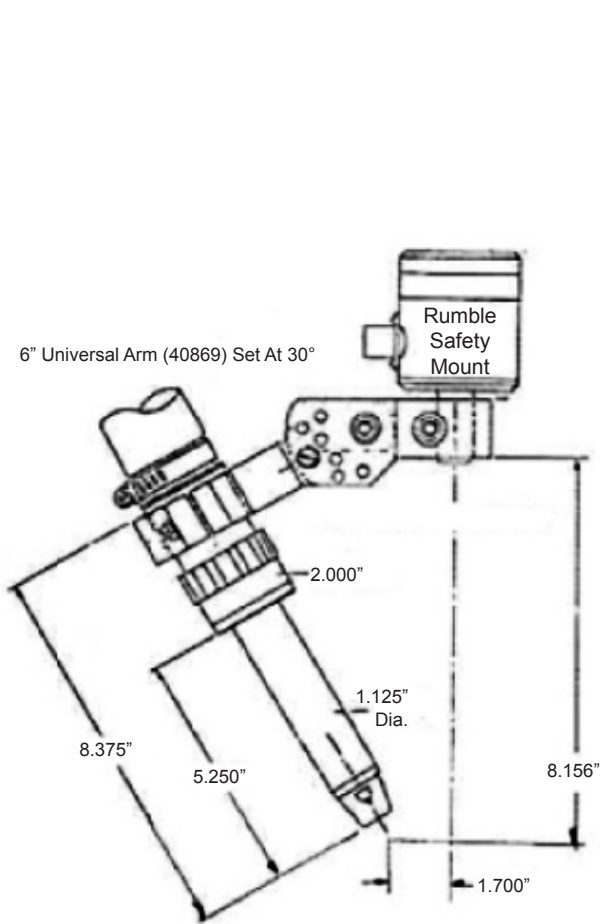
Ordering Information

Description	Code No.
W/C Machine Barrel Assembly - Mini	
W/C Machine Barrel Assembly - 13197	
W/C Machine Barrel Assembly - 13198	
W/C Machine Barrel Assembly - 16384	
W/C Machine Barrel Assembly - Gasless	47458

ROBOTIC MACHINE BARREL LAYOUT

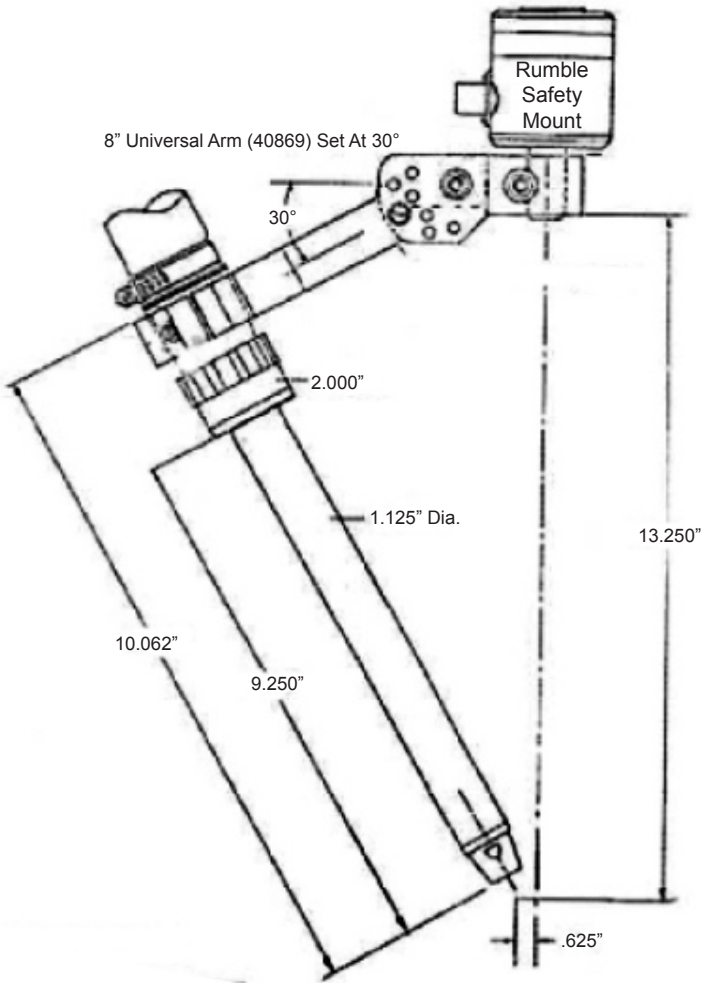
Universal Mounting Arms 40869 & 40870

5" & Long Reach Water-Cooled Nozzles



Ordering Information

Complete Standard Assemblies Consist of Machine Barrel Assembly Docking Spool® Body	
NCM-N	HTM-N
40704	

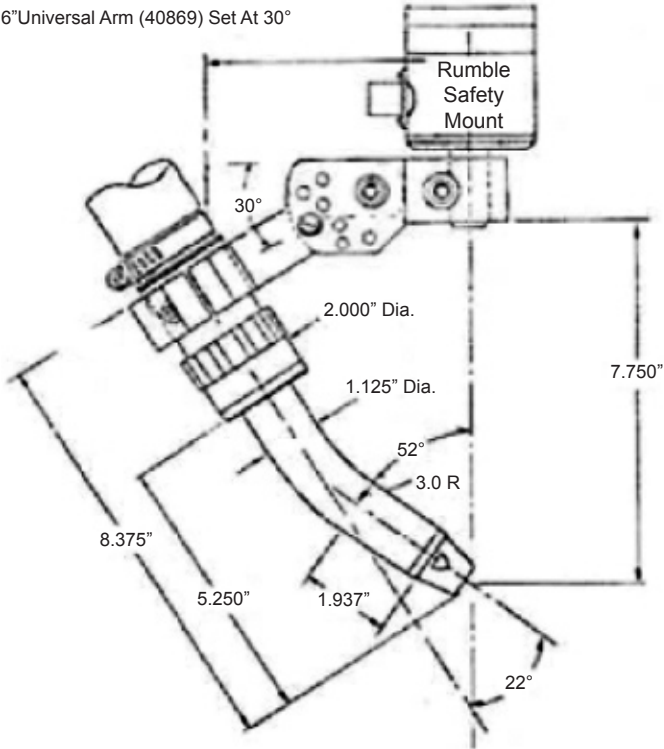


Ordering Information

Complete Standard Assemblies Consist of Machine Barrel Assembly Docking Spool® Body	
NCM-N	HTM-N
40786	

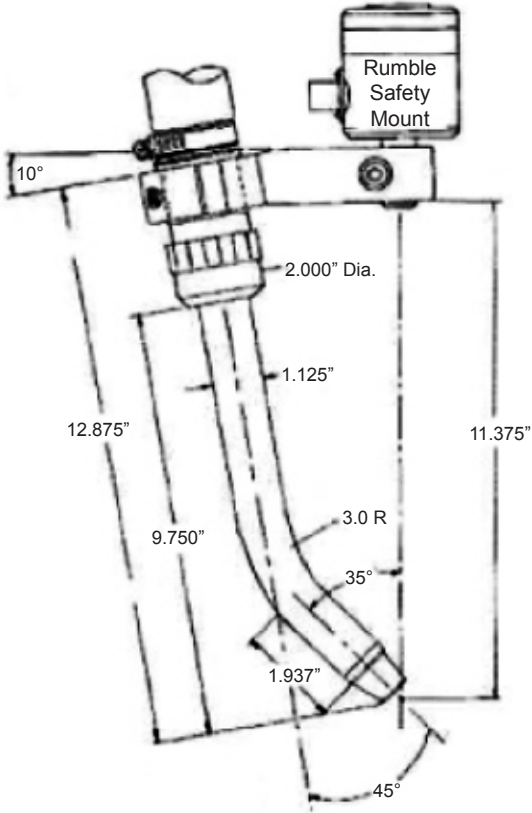
ROBOTIC CURVED GUN LAYOUT

Universal Mounting Arm 40869 at 30° & Mounting Arm 40534 10° 22° 5" & 35° LRN Water-Cooled Nozzles



Ordering Information

Complete Standard Assemblies Consist of Machine Barrel Assembly Docking Spool® Body	
NCM-N	HTM-N
40704	

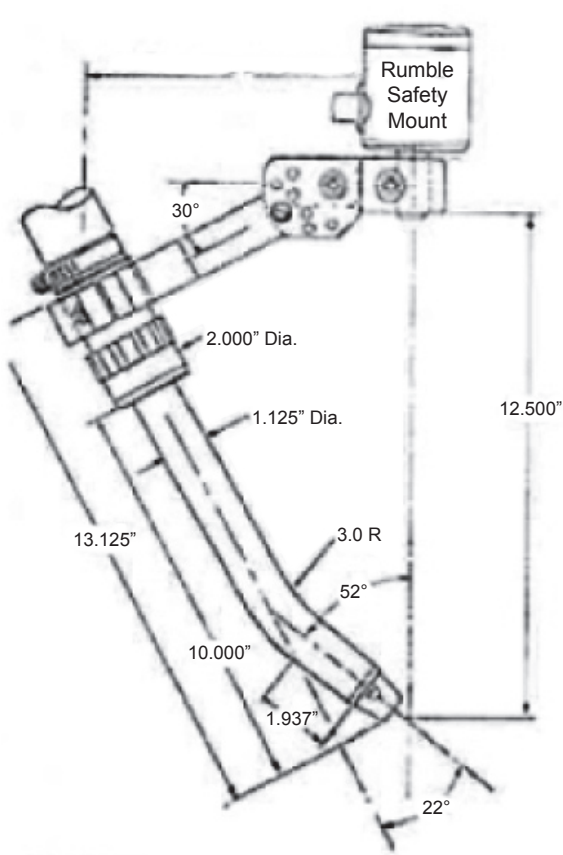


Ordering Information

Complete Standard Assemblies Consist of Machine Barrel Assembly Docking Spool® Body	
NCM-N	HTM-N
40786	

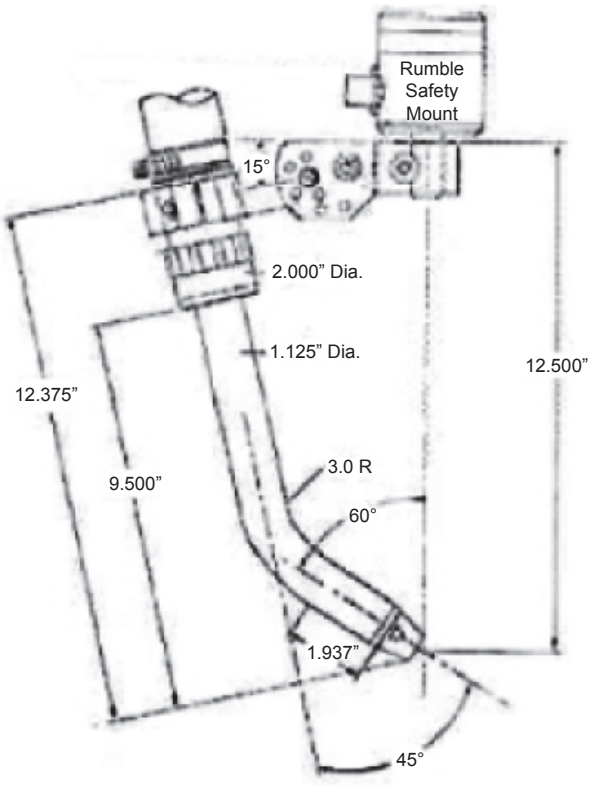
ROBOTIC CURVED GUN LAYOUT

Universal Mounting Arms 40870 at 30° & 40869 at 15°
 22° Long Reach & 45° Long Reach Water-Cooled Nozzles



Ordering Information

Complete Standard Assemblies Consist of Machine Barrel Assembly Docking Spool® Body	
NCM-N	HTM-N
40785	



Ordering Information

Complete Standard Assemblies Consist of Machine Barrel Assembly Docking Spool® Body	
NCM-N	HTM-N
40700	

D/F MACHINE SPECIALTIES, INC.

MIG & TIG Welding Products, Consumables & Accessories

WARRANTY

This Equipment is sold by D/F Machine Specialties, Incorporated, under the warranty set forth in the following paragraph. Such warranty is extended only to the buyer who purchases the equipment directly from D/F or its authorized distributor as new merchandise.

The barrel and cable assemblies are warranted by D/F to be free from manufacturing defects for 90 days after delivery by D/F, provided that the equipment is properly operated under conditions of normal use and that regular periodic maintenance and service is performed. Expendable parts are not warranted for any specific time. Expendable parts referred to herein would be the nozzles, current tips, spatter discs, insulators, casing liners, and wire inlets. D/F's sole obligation under this warranty is limited to making replacement at its manufacturing facility for barrel assemblies which are returned to it with transportation charges prepaid, and upon D/F's examination have been found to be so defective.



D/F MACHINE SPECIALTIES, INC.

1750 Howard Drive

North Mankato, MN 56003

Phone: (507) 625-6200

Fax: (507) 625-6203

www.dfmachinespecialties.com